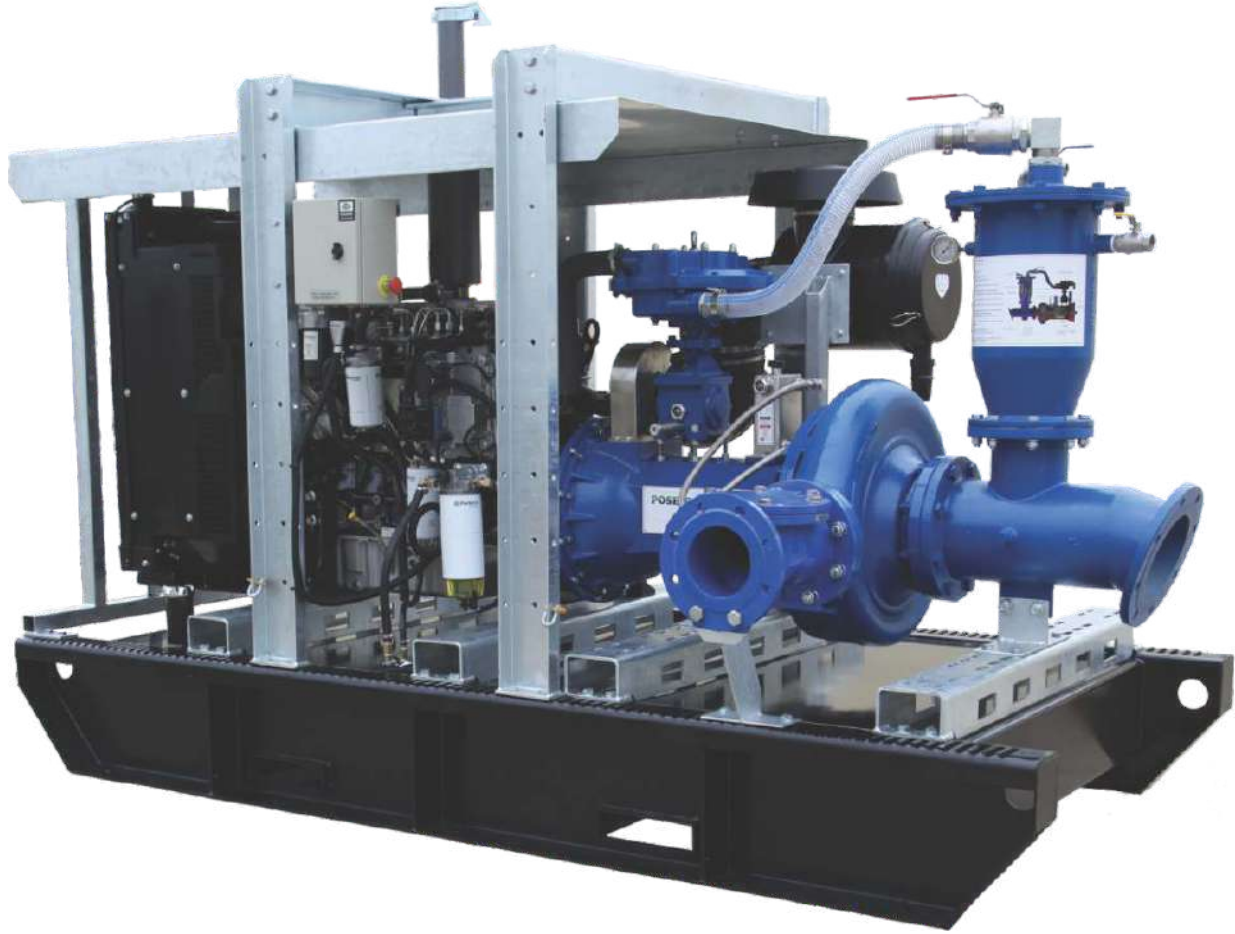


POSEIDON DRY PRIME SERIES

INDO-AUSTRALIAN JOINT VENTURE AUSTRALIA

HP Series - 315



High head medium flow series

Standard MOC - Pump Section

1. All Wet ends - SG 500/7
2. Impeller - SS316L
3. Shaft SS-431
4. Diaphragm Pump Single 50 CFM
5. For electrical Driven Galvanized Frame

Options - MOC

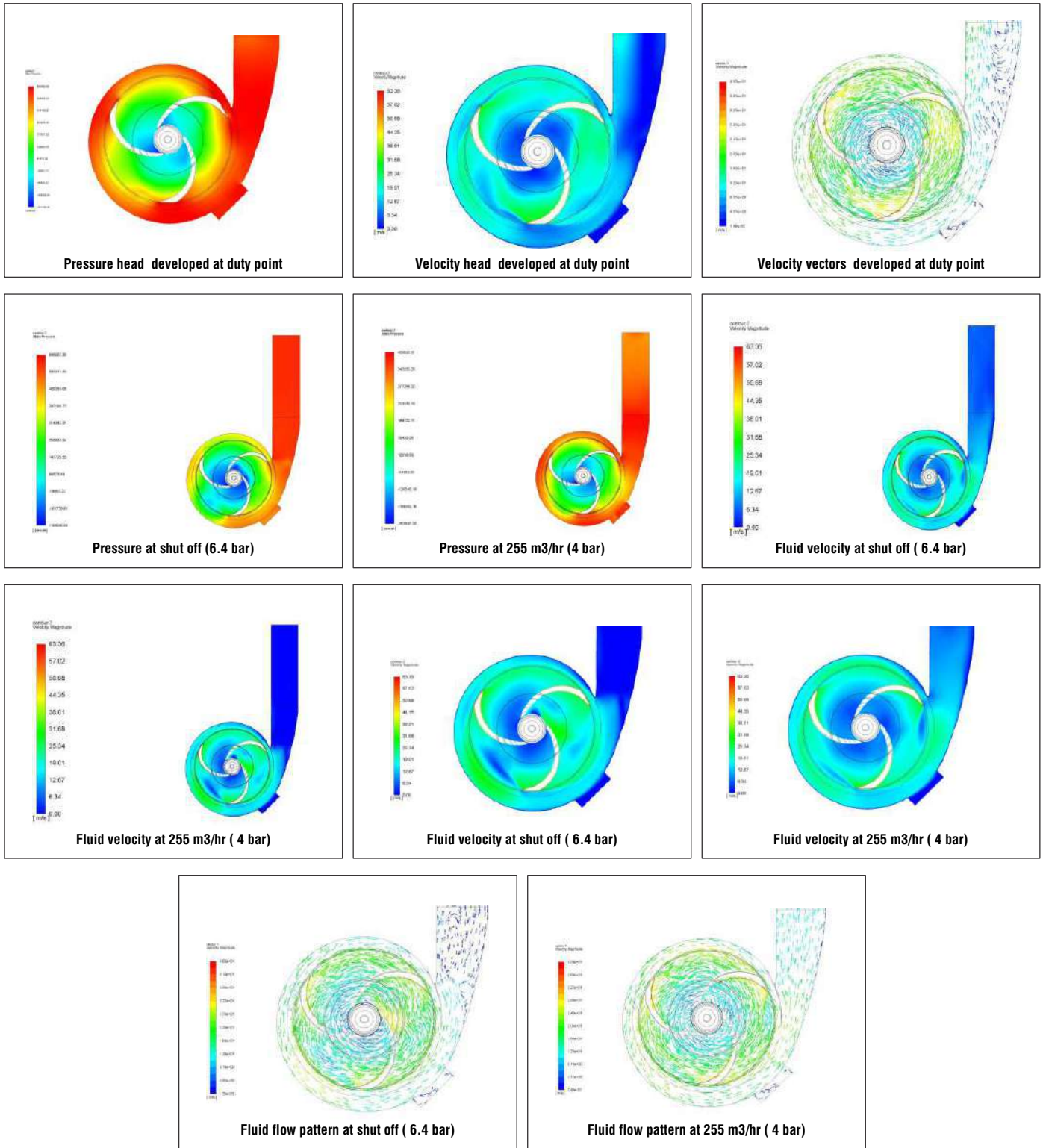
1. SS316L - All Wet ends
2. Duplex Steel - All Wet ends
3. Nickel - Aluminum - Bronze - All Wet ends for Sea Water Application
4. Skid - Road trailer - Site Trailer - Closed enclosure

INDRA HYDRO TECH PUMPS PVT LTD

No.85/M, Ground Floor, Industrial Suburb, 2nd Stage Gautham Nagar, Tumkur Road
 Yeshwanthpur, Bangalore 560 022, Karnataka, INDIA
 Tel. : +91 80 4163 5638, Mobile: +91 94835 26899 / 80736 22800
 Email : sales@ihpumps.in, Web : www.ihpindia.in | www.ihpumps.in

POSEIDON PUMPS

Named after the Greek God of water, symbolising strength in a turbulent environment. The modern Poseidon stands for engineering know-how and reliability in a modern age where the environment, precision manufacturing, reliability, efficiencies and economics are the new norms that rule the waves. No longer are inefficient and wasteful pumps acceptable, inefficiencies cost time and valuable resources. Poseidon Pumps uses the most advanced hydro dynamic CFD computer software available in the market for pump impeller and casing design to optimise pump efficiencies and component reliability. Together with extensive R&D and pump testing in our state of the art computerised pump testing stations, has allowed us to create a highly efficient range of Poseidon pumps with low NPSH.



INDRA HYDRO TECH PUMPS PVT LTD

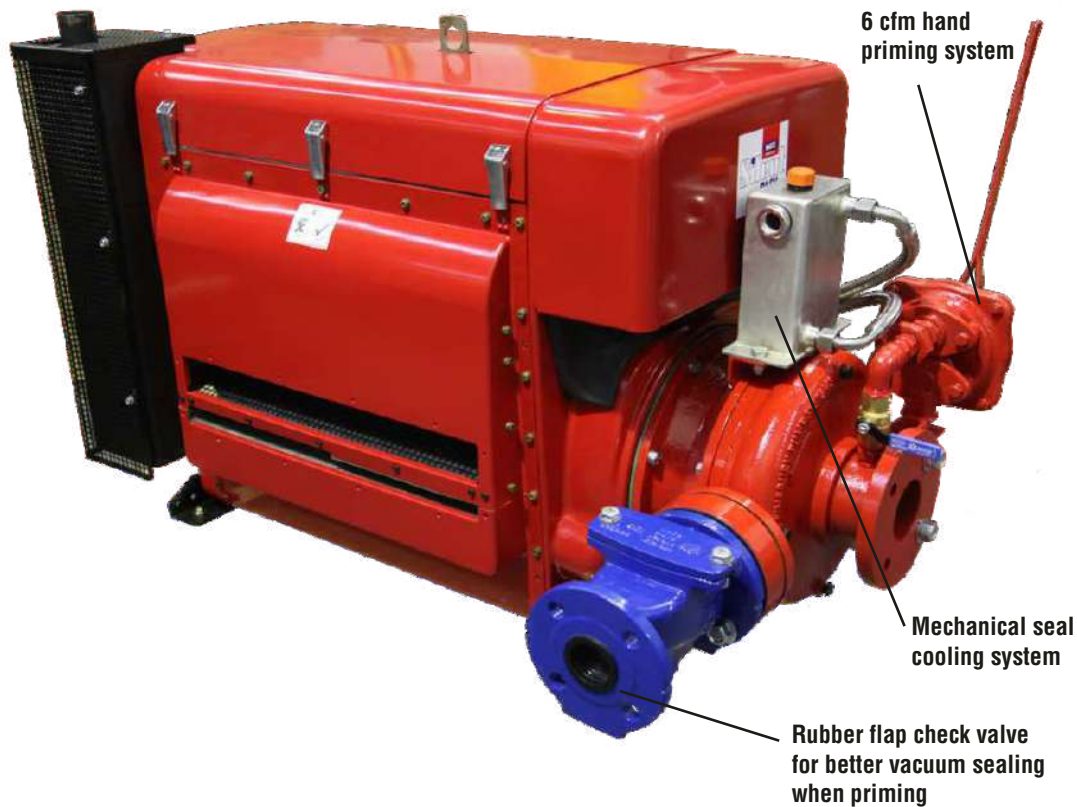
No.85/M, Ground Floor, Industrial Suburb, 2nd Stage Gautham Nagar, Tumkur Road
 Yeshwanthpur, Bangalore 560 022, Karnataka, INDIA
 Tel. : +91 80 4163 5638, Mobile: +91 94835 26899 / 80736 22800
 Email : sales@ihpumps.in, Web : www.ihpindia.in | www.ihpumps.in

Manual Dry Prime Systems

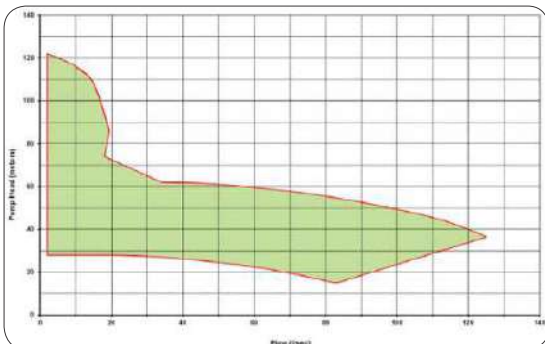
The Poseidon range of Dry Running Manual Prime pumps comes in 5 models which cover a flow range of up to 127L/sec and heads up to 122m. The manual priming system is via a 6 cfm hand diaphragm pump mounted on the centrifugal pump.

Complete with an oil cooled mechanical seal system for dry running of the pump system, an essential feature of preventing premature mechanical seal failure. These pumps are directly coupled to the engine without a bearing housing resulting in a very small foot print.

A 80x50-250MDP6 pump mounted to a Hatz Silence pack 4 cylinder diesel engine - ideal package for fire fighting purposes.



As this range of pumps can operate without any initial water charge in the casing, this takes all the worry out of the potential of destroying the mechanical seal when the pump runs out of water. Ideal for emergency services operations where the reliability of water supplies can vary greatly. Also the system does not need a foot valve but can be primed with the manual 6 cfm hand diaphragm priming pump up to 5 to 6m above the water source. The priming pump can be isolated from the main centrifugal pump via a small ball valve. Waste water with small soft solids can also be pumped, this will require a strainer at the inlet of the suction hose to restrict oversized solids to enter the pump.



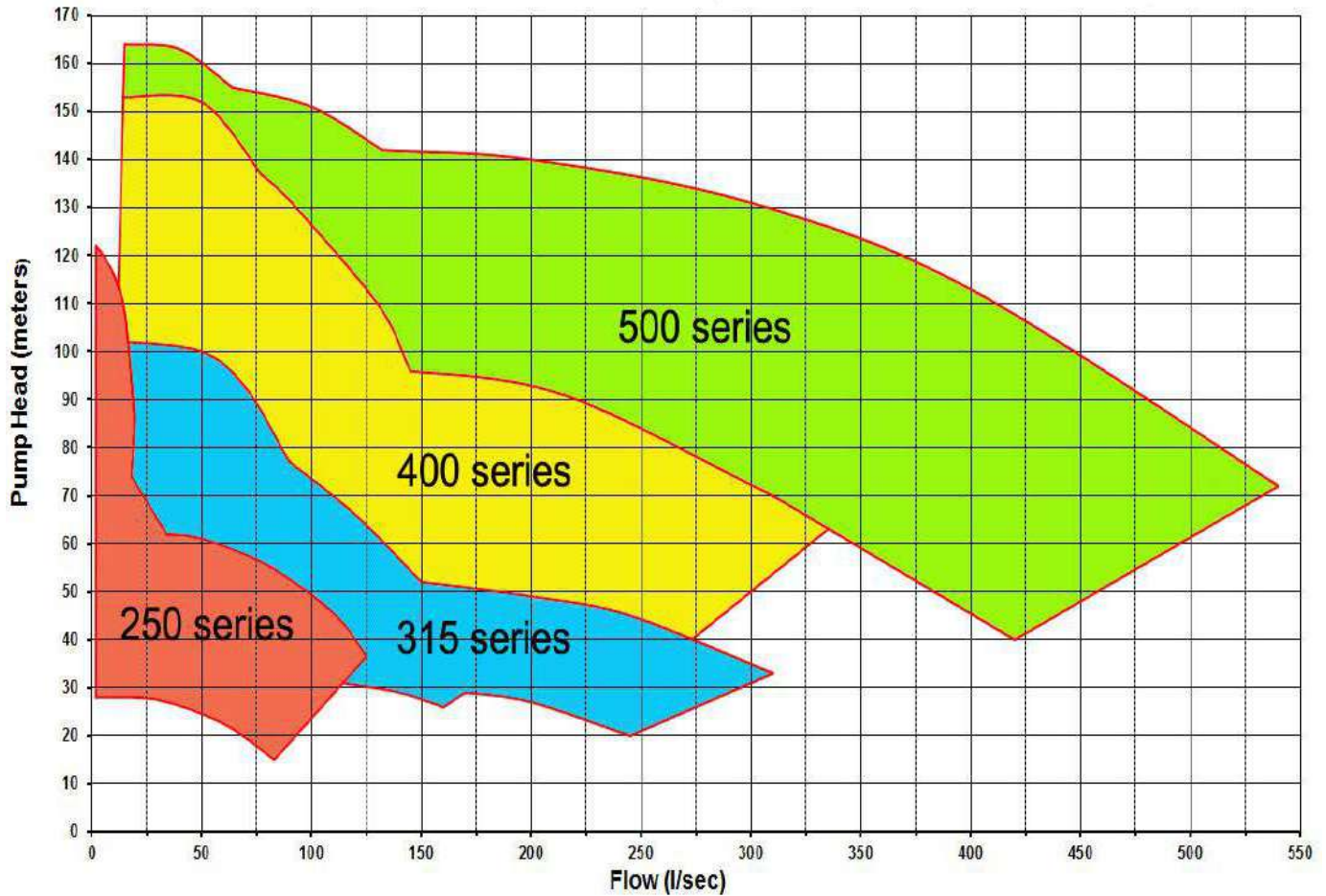
Pump part number	Inlet size mm	Outlet size mm	Power kw	Max flow rate L/sec	Max head m	Max solid size mm
65x40-250A-MPD6	65	40	45	19.5	122	11
80x50-250A-MPD6	80	50	44	27.5	84	16
100x65-250A-MPD6	100	65	53	40	75.5	19
125x100-250A-MPD6	125	100	55	71	65	24
150x125-250A-MPD6	150	125	74	127	62	29

INDRA HYDRO TECH PUMPS PVT LTD

No.85/M, Ground Floor, Industrial Suburb, 2nd Stage Gautham Nagar, Tumkur Road
 Yeshwanthpur, Bangalore 560 022, Karnataka, INDIA
 Tel. : +91 80 4163 5638, Mobile: +91 94835 26899 / 80736 22800
 Email : sales@ihpumps.in, Web : www.ihpindia.in | www.ihpumps.in

Automatic Dry Prime Systems

The Poseidon range of Dry Running Automatic Prime pumps comes in 18 models which cover a flow range of up to 540L/sec and heads up to 168m. Automatic priming via the patented Smartprime™ 50 or 100 cfm diaphragm pump and priming tank. Complete with the oil cooled mechanical seal system for the dry running of the pump system.

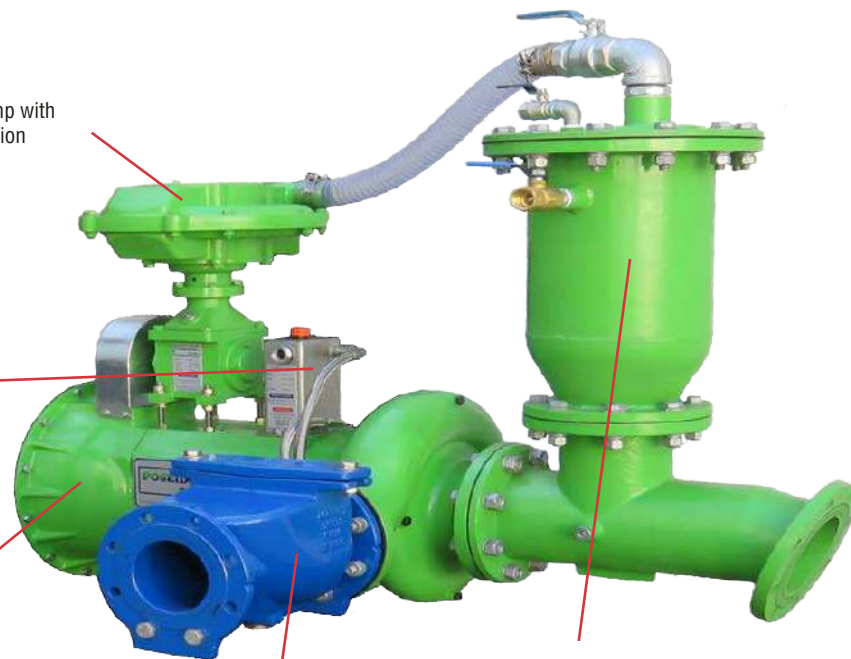


50 cfm Diaphragm priming pump with an oil free vacuum priming suction capacity of 8.4m or 27ft.

A twin head diaphragm pump with a 100cfm capacity is also available for larger air quantity removal requirements.

Mechanical seal oil cooling system for dry running operations.

Directly coupled to a range of engines via a SAE standard bell housing and heavy duty flexible flywheel coupling.



All units come complete with a check valve to allow priming to occur.

Smartprime™ priming tank complete with stainless steel floats and the new Poseidon safety valve preventing fluid entry into the diaphragm pump thus guaranteeing a totally clean and oil or fluid free priming operation

INDRA HYDRO TECH PUMPS PVT LTD

No.85/M, Ground Floor, Industrial Suburb, 2nd Stage Gautham Nagar, Tumkur Road
 Yeshwanthpur, Bangalore 560 022, Karnataka, INDIA
 Tel. : +91 80 4163 5638, Mobile: +91 94835 26899 / 80736 22800
 Email : sales@ihpumps.in, Web : www.ihpindia.in | www.ihpumps.in

POSEIDON Pumps

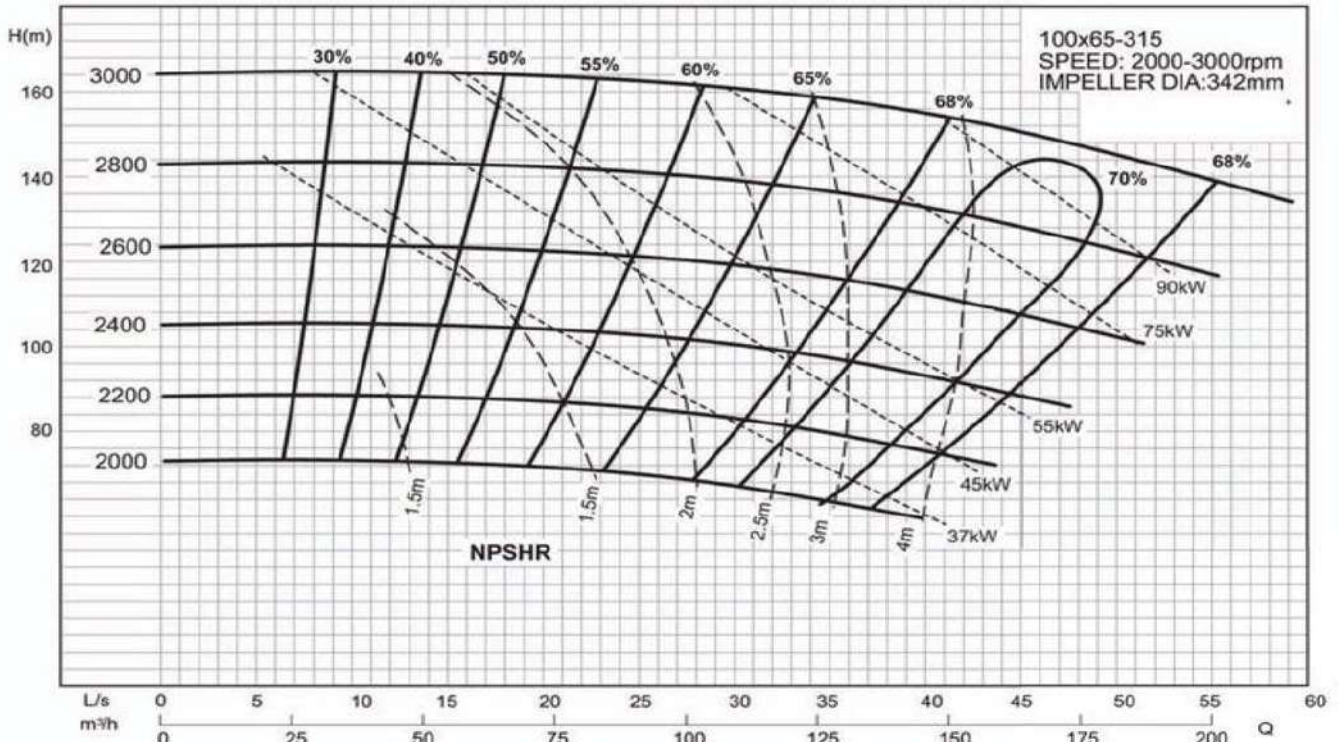
Automatic Dry Prime 315 series



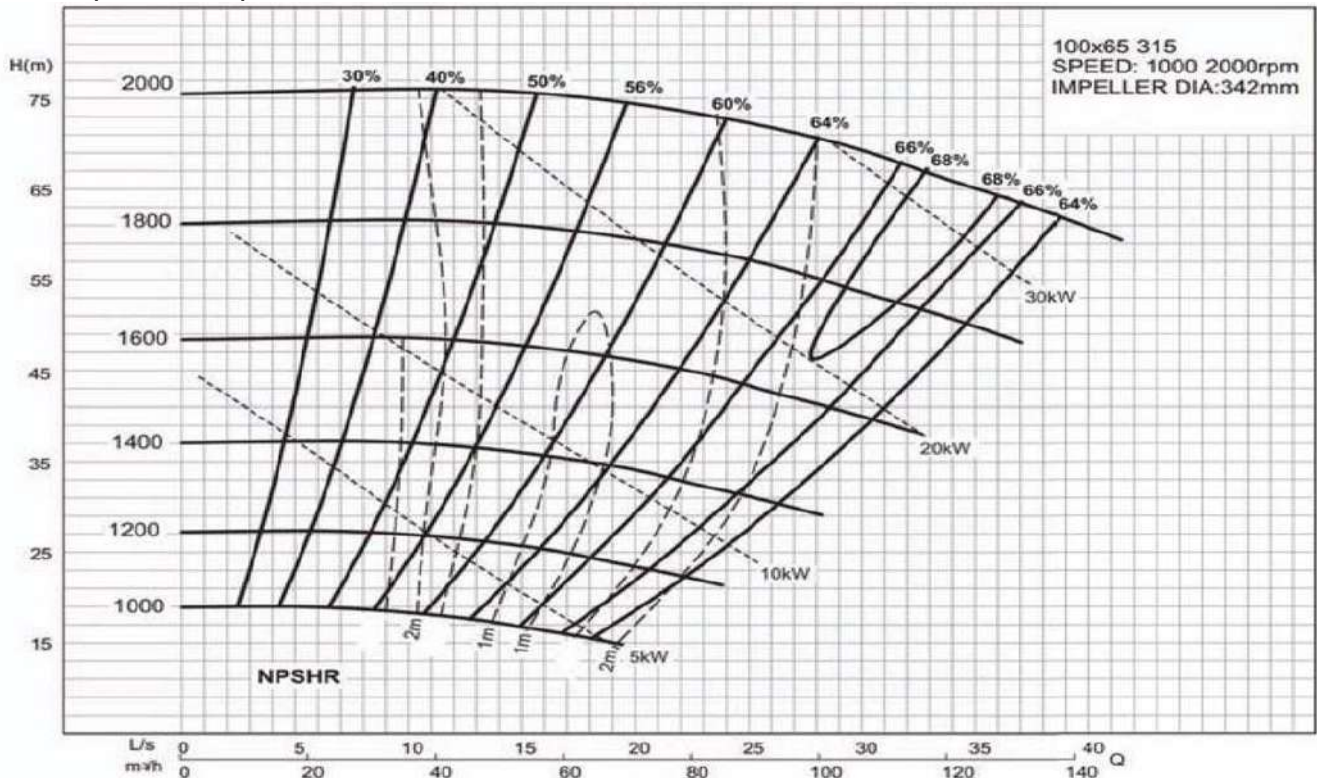
DRY PRIME PUMPS

Part number 100x65-315A-ADP50

Variable speed - faster speeds:



Variable speed - slower speeds:



INDRA HYDRO TECH PUMPS PVT LTD

No.85/M, Ground Floor, Industrial Suburb, 2nd Stage Gautham Nagar, Tumkur Road
Yeshwanthpur, Bangalore 560 022, Karnataka, INDIA
Tel. : +91 80 4163 5638, Mobile: +91 94835 26899 / 80736 22800
Email : sales@ihpumps.in, Web : www.ihpindia.in | www.ihpumps.in

POSEIDON Pumps

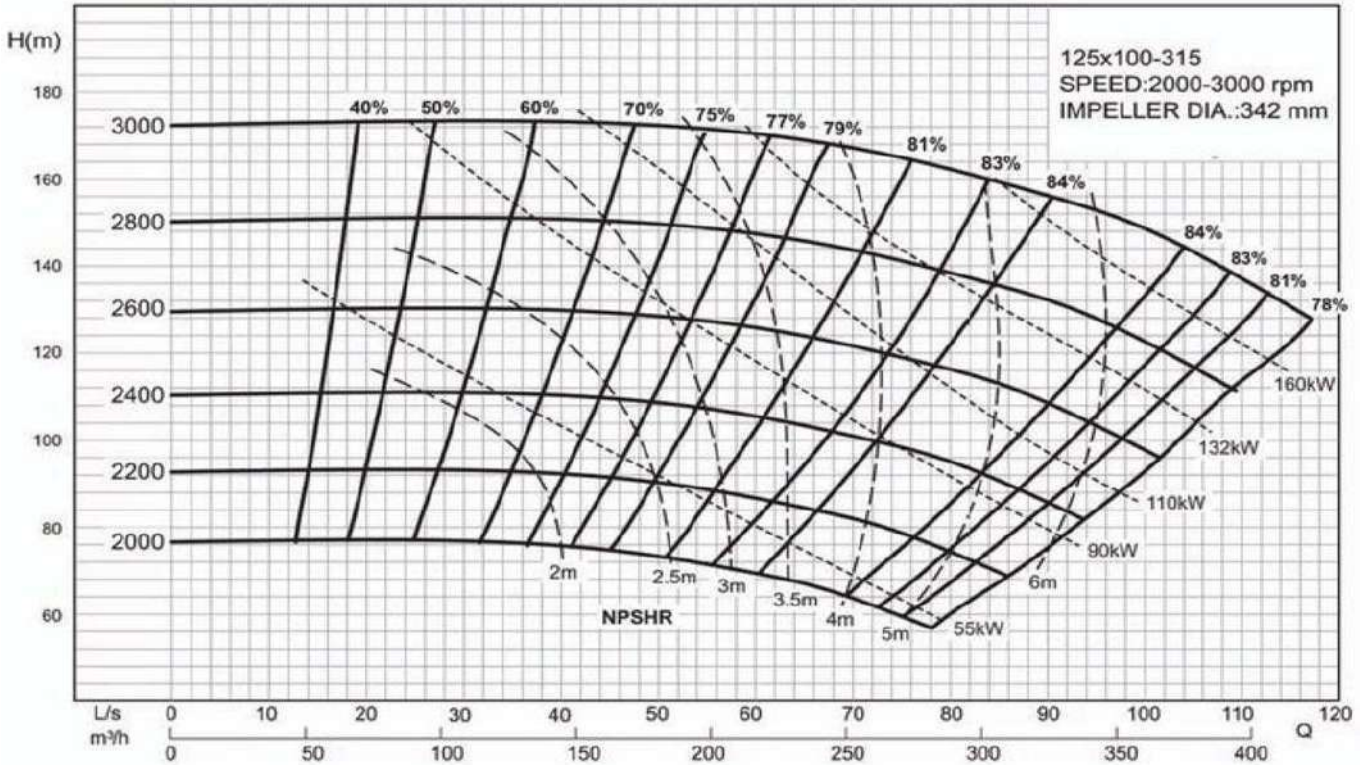
Automatic Dry Prime 315 series



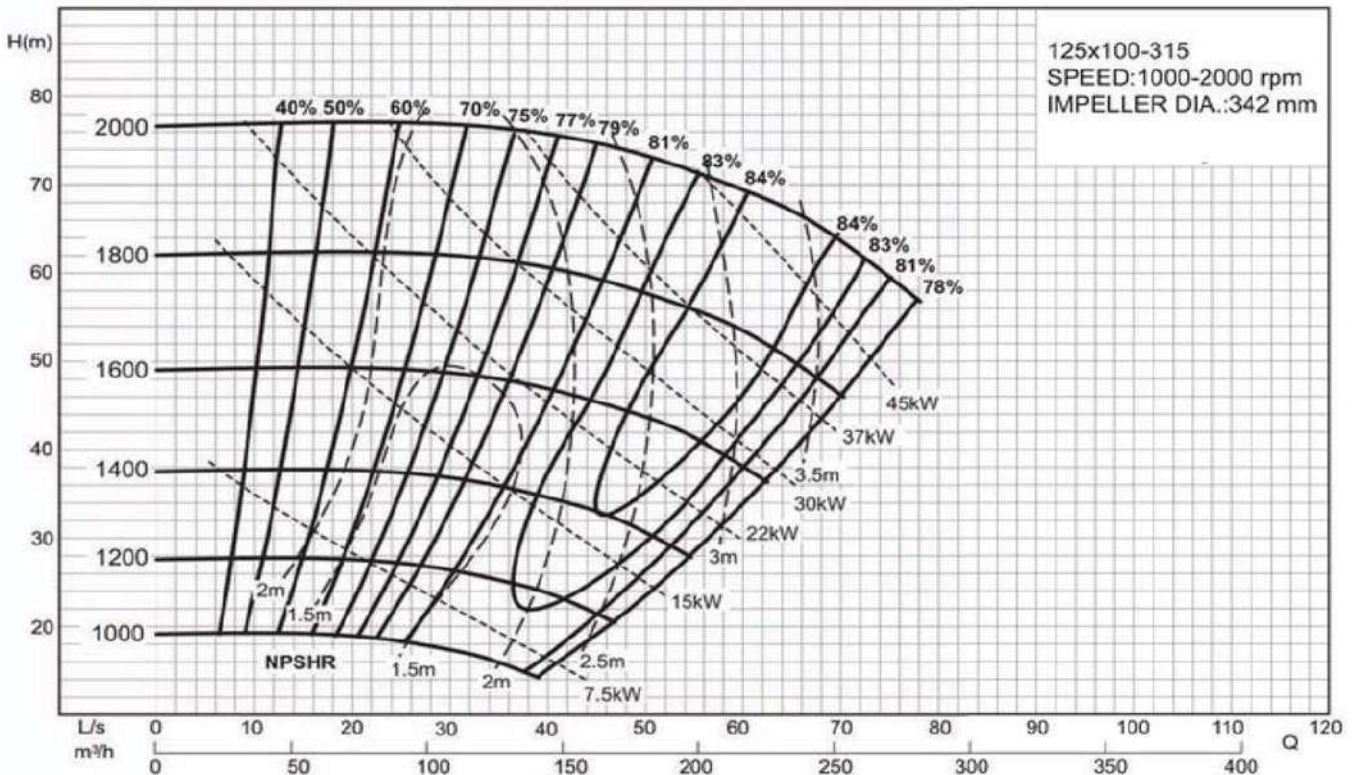
DRY PRIME PUMPS

Part number 125x100-250A-ADP50

Variable speed - faster speeds:



Variable speed - slower speeds:



INDRA HYDRO TECH PUMPS PVT LTD

No.85/M, Ground Floor, Industrial Suburb, 2nd Stage Gautham Nagar, Tumkur Road
Yeshwanthpur, Bangalore 560 022, Karnataka, INDIA
Tel. : +91 80 4163 5638, Mobile: +91 94835 26899 / 80736 22800
Email : sales@ihpumps.in, Web : www.ihpindia.in | www.ihpumps.in

POSEIDON Pumps

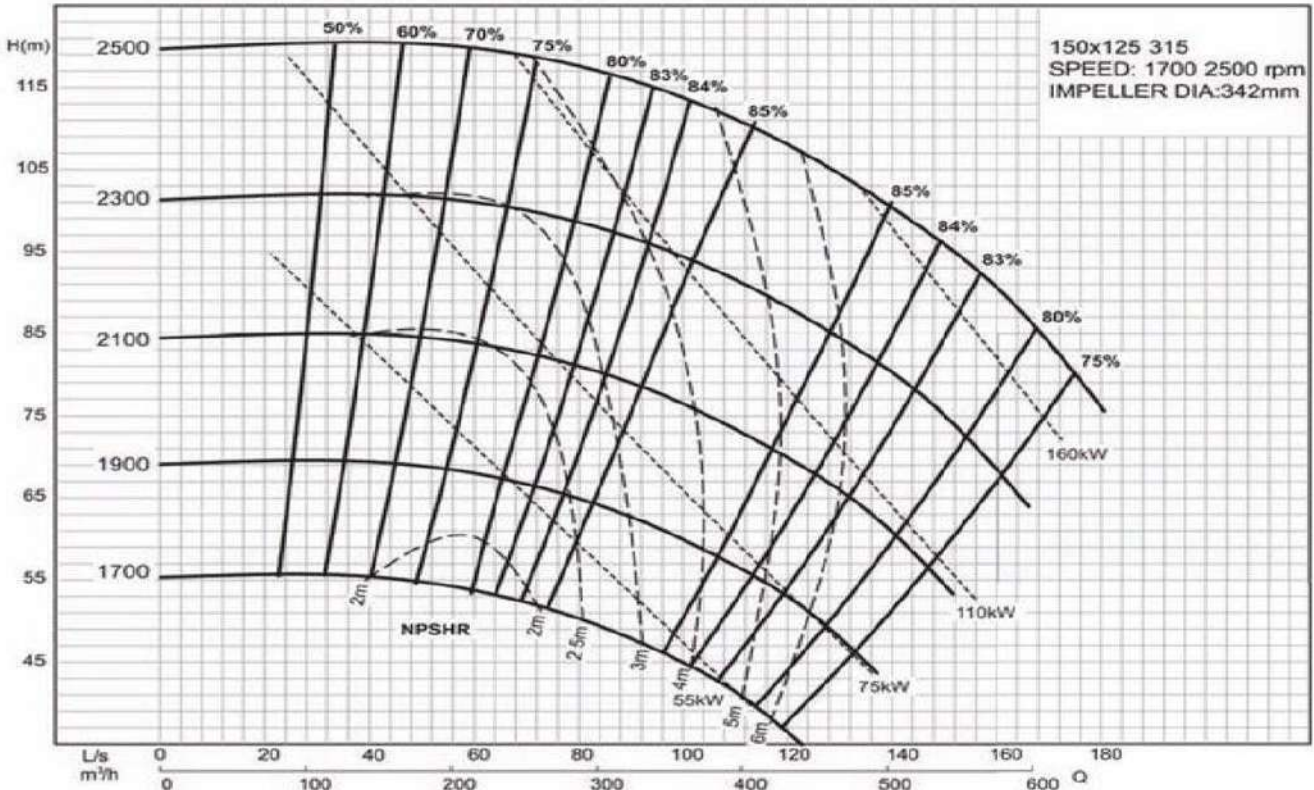
Automatic Dry Prime 315 series



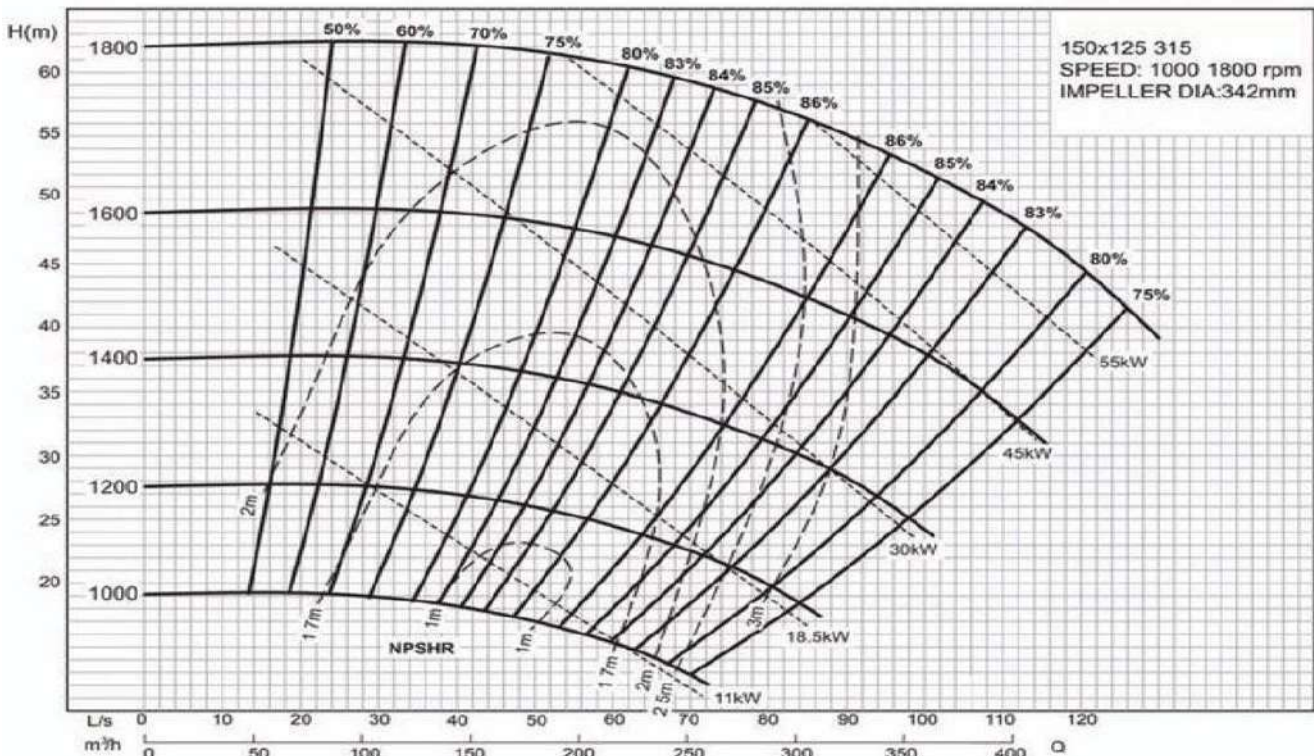
DRY PRIME PUMPS

Part number 150x125-315A-ADP50

Variable speed - faster speeds:



Variable speed - slower speeds:



INDRA HYDRO TECH PUMPS PVT LTD

No.85/M, Ground Floor, Industrial Suburb, 2nd Stage Gautham Nagar, Tumkur Road
Yeshwanthpur, Bangalore 560 022, Karnataka, INDIA
Tel. : +91 80 4163 5638, Mobile: +91 94835 26899 / 80736 22800
Email : sales@ihpumps.in, Web : www.ihpindia.in | www.ihpumps.in



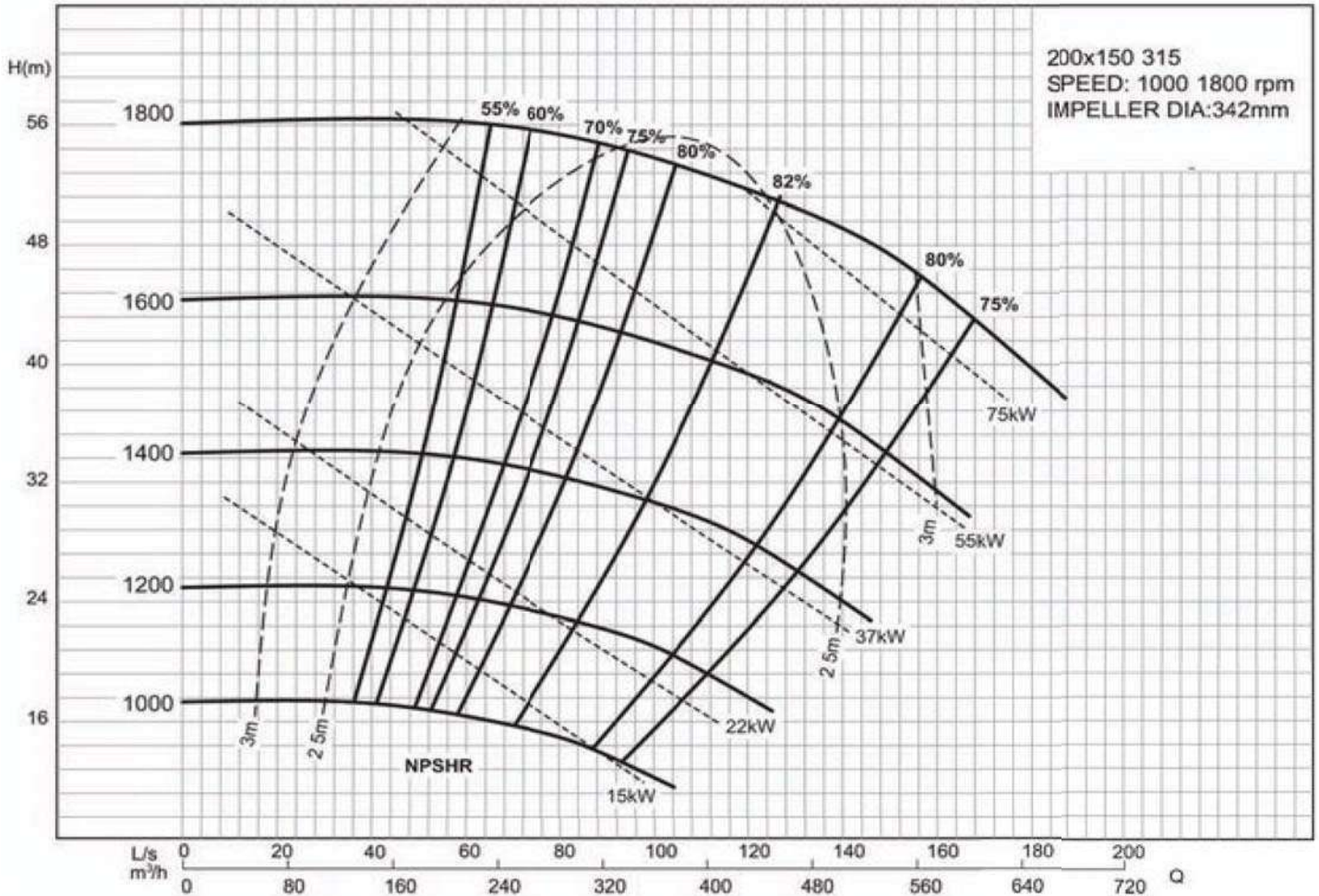
Automatic Dry Prime 315 series



DRY PRIME PUMPS

Part number 200x150-315A-ADP50

Variable speed:



INDRA HYDRO TECH PUMPS PVT LTD

No.85/M, Ground Floor, Industrial Suburb, 2nd Stage Gautham Nagar, Tumkur Road
 Yeshwanthpur, Bangalore 560 022, Karnataka, INDIA
 Tel. : +91 80 4163 5638, Mobile: +91 94835 26899 / 80736 22800
 Email : sales@ihpumps.in, Web : www.ihpindia.in | www.ihpumps.in



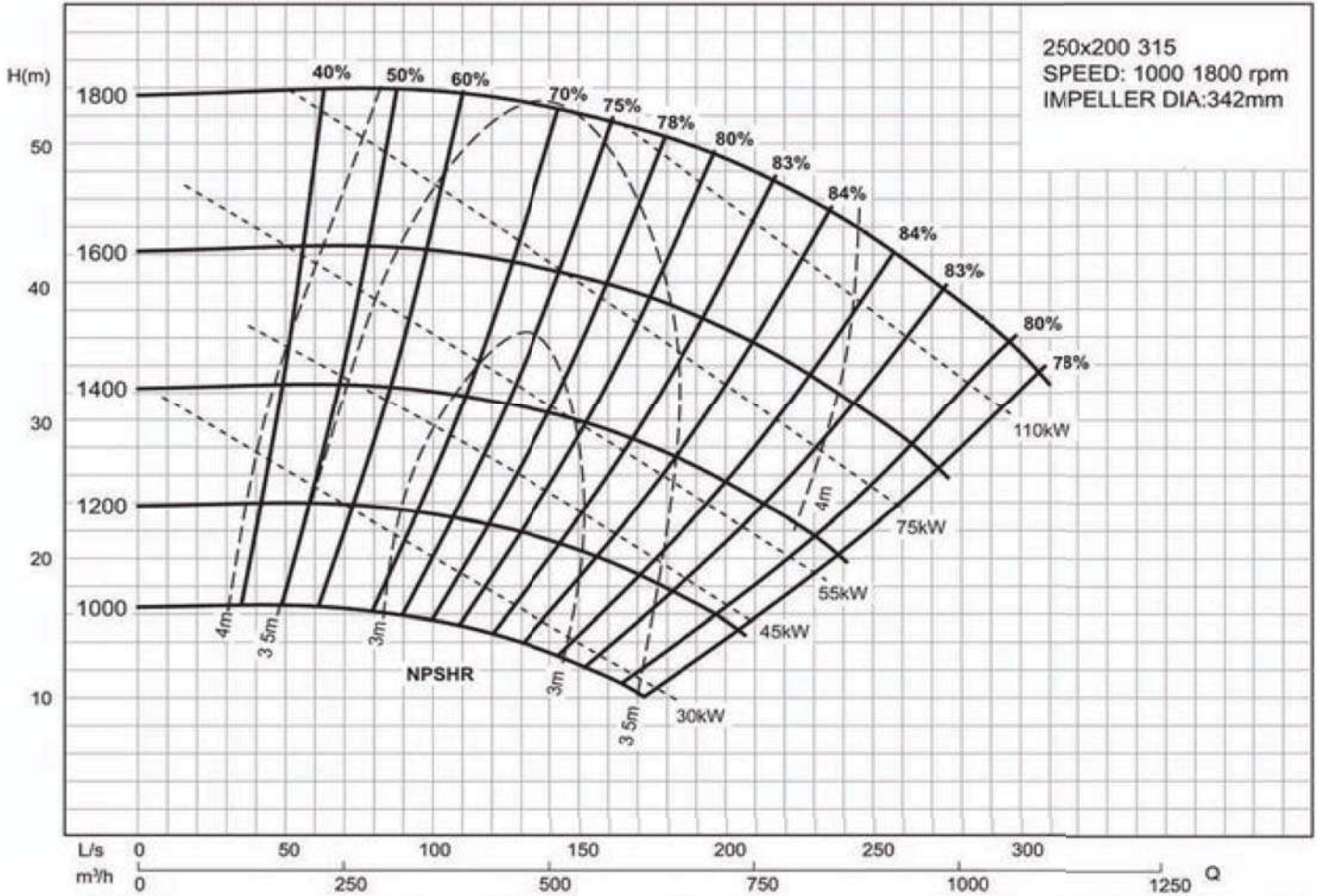
Automatic Dry Prime 315 series



DRY PRIME PUMPS

Part number 250x200-315A-ADP50

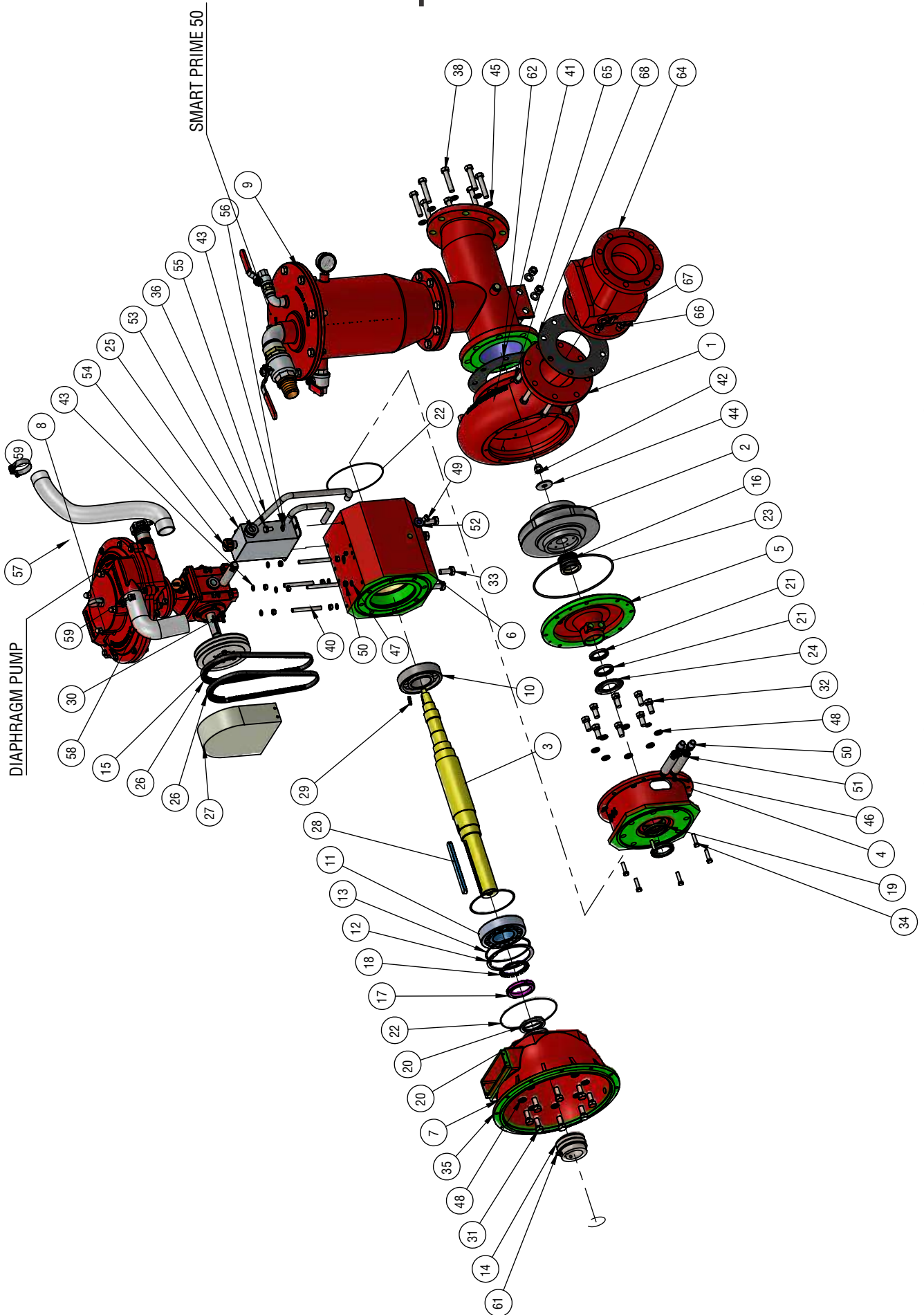
Variable speed:



INDRA HYDRO TECH PUMPS PVT LTD

No.85/M, Ground Floor, Industrial Suburb, 2nd Stage Gautham Nagar, Tumkur Road
 Yeshwanthpur, Bangalore 560 022, Karnataka, INDIA
 Tel. : +91 80 4163 5638, Mobile: +91 94835 26899 / 80736 22800
 Email : sales@ihpumps.in, Web : www.ihpindia.in | www.ihpumps.in

Model Exploded view



INDO-AUSTRALIAN JOINT VENTURE AUSTRALIA

INDRA HYDRO TECH PUMPS PVT LTD

No.85/M, Ground Floor, Industrial Suburb, 2nd Stage Gautham Nagar, Tumkur Road
 Yeshwanthpur, Bangalore 560 022, Karnataka, INDIA
 Tel. : +91 80 4163 5638, Mobile: +91 94835 26899 / 80736 22800
 Email : sales@ihpumps.in, Web : www.ihpindia.in | www.ihpumps.in

Model Bill of material

PART NUMBER	PART DESCRIPTION	QTY			
1		1		BhH10X45-ZP	HEX HEAD BOLTS M10X45
2		1		BHH10x25-ZP	HEX HEADED BOLT M10x25
3	Pump casing	1		BHH12x25-ZP	HEX HEADED BOLT M12x25
4	Impeller	1		BHH6x12-ZP	HEX HEADED BOLT M6x12
5	Shaft 431 Stainless Steel	1		BHH16x15-ZP	HEX HEADED BOLT M16x15
6	Bell Housing	1		BHH8x40-ZP	HEX HEADED BOLT M8x30
7	Pump Back Plate	1		ST-12X1.5X120	STUD- ST12X1.5X120
8	Bearing Housing	1		NUT M16	NUT M16
9	Bell Housing	1		DN16X2-304SS	IMPELLER DOME NUT
10	Diaphragm (50cfm)	1		FW M12-ZP	FLATE WASHER M12
11	Priming System (150mm)	1		FW M16-304SS	FLATE WASHER M16
12	Front Bearing	1		FW M16-ZP	FLATE WASHER M16
13	Rear Bearing	1		SW-10	SPRING WHASER M10
14	Oil seal bearing-80*60*8	2		SW-12	SPRING WHASER M12
15	Oil seal bearing-88*70*8	2		SW-16	SPRING WHASER M16
16	Oil seal dry run back plate*65*50*8	2		P1/2-G	DRAIN PLUG 1/2" BSP
17	O-RING FOR BEARING HOUSING-196.85*2.62	2		N1/2-G	OIL HOSE CONNECTOR 1/2" BSP
18	O-RING FOR pump casing-278.77*3.53	1		OHC1/2-G	OIL HOSE EXTENSION 1/2" BSP
19	50mm ID Water slinger	1		SG3/4	SIGHT GLASS 3/4" BSP
20	OIL TANK	1		SG1	SIGHT GLASS 1" BSP
21	DIAPHRAGM CONNECTING BELT	1		BC1/2	BREATHER CAP 1/2" BSP
22	PRIMING TANK PULLEY GUARD	1		E50-012	OIL DISCHARGE HOSE-550
23	ENGINE SHAFT KEY-18x11x190	1		E50-012	OIL SUCTION HOSE-350
24	IMPELLER KEY	1		AG202AA-050	SUCTION HOSE-50mm*580MM
25	DIAPHRAGMA PULLEY KEY- 6.3x6.3x36	1		AG202AA-050	DISCHARGE HOSE-50mm
26	HEX HEADED BOLT M16x1.5x40	8		HC63-68-MS	HOSE CLAMPS 50mm
27	HEX HEADED BOLT M16x1.5x35	8		NUT M12X1.5	NUT M12X1.5
28	HEX HEADED BOLT M16x1.5x30	4		GS10X12-B	GRUB SCREW-M10X12
29		1			KTR COUPLING
30		2			NRV
31		1		NRV-125	RUBBER FLAPPER CHECK VALVE
32		1		BHH16x70-ZP	HEXA HEADED BOLT M16x70
33		1		FW M16	FLATE WASHER M16
34		1		N16-G	HEXA HEADED NUT N20
35		1		GASKET	5" GASKET

INDO-AUSTRALIAN JOINT VENTURE AUSTRALIA

INDRA HYDRO TECH PUMPS PVT LTD

No.85/M, Ground Floor, Industrial Suburb, 2nd Stage Gautham Nagar, Tumkur Road

Yeshwanthpur, Bangalore 560 022, Karnataka, INDIA

Tel. : +91 80 4163 5638, Mobile: +91 94835 26899 / 80736 22800

Email : sales@ihpumps.in, Web : www.ihpindia.in | www.ihpumps.in



All pumps can be supplied with optional sound and weather covers for the engine only or for the whole pump-set.

Poseidon pumps can be mounted on a variety of base types and coupled to a large range of different engine makes and models.



All pump types can be trailer mounted, in either a heavy duty road or site trailer configuration.

INDRA HYDRO TECH PUMPS PVT LTD

No.85/M, Ground Floor, Industrial Suburb, 2nd Stage Gautham Nagar, Tumkur Road
 Yeshwanthpur, Bangalore 560 022, Karnataka, INDIA
 Tel. : +91 80 4163 5638, Mobile: +91 94835 26899 / 80736 22800
 Email : sales@ihpumps.in, Web : www.ihpindia.in | www.ihpumps.in