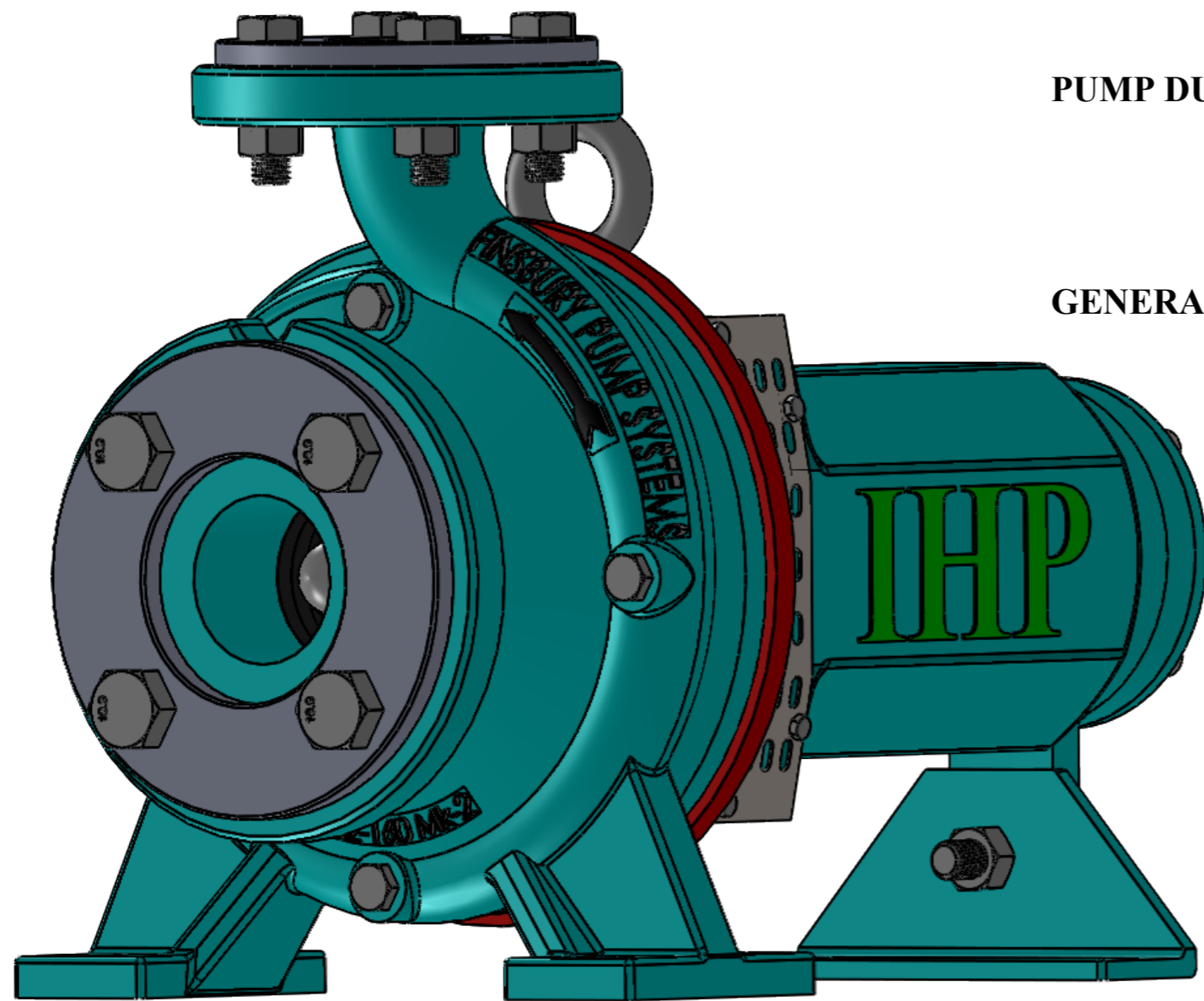


THE BARE SHAFT SINGLE STAGE CENTRIFUGAL PUMPS DESIGNED AND MANUFACTURED TO ISO STANDARD 2858



PUMPS : Model : 50 X32-160-A
 Casing : Cast Iron -16 bar pressure rating
 Impeller : Cast iron
 Shaft : 431 stainless steel with water slinger
 Mechanical seal : Carbon ceramic
 Bearings : Fully sealed heavy duty roller bearings


PUMP DUTY: Maximum head : 63.5m
 Maximum flow : 11.4L/sec
 Maximum shaft power : 10kw at maximum flow
 Maximum speed : 3500rpm

GENERAL : Maximum ambient temperature : +60°c
 Maximum fluid temperature : +80°c
 Maximum casing pressure : 16 bar
 Fluids must be clean and free from abrasive particals

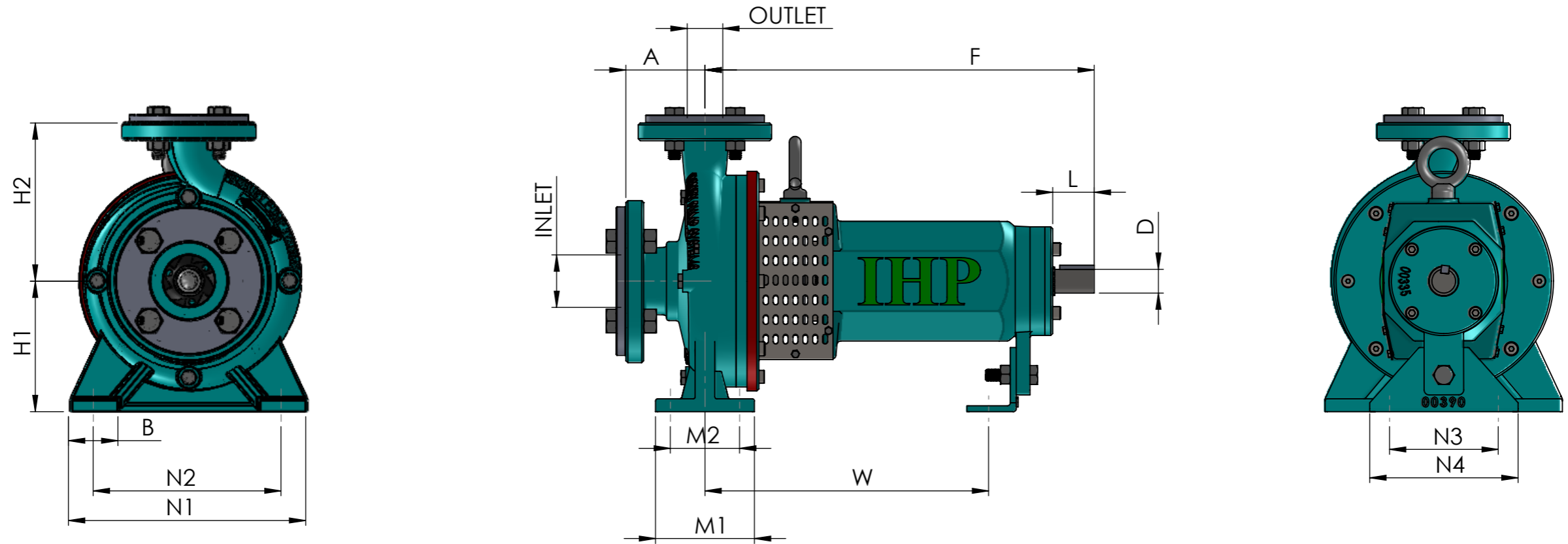
Performance curves : The performance cureves are based on a kinematic viscosity value of 1mm2/s and a density of 1000kg/m3 at 15° c

Wear rings : Bronze wear rings can be fitted to impeller and casings.

ALL DIMENSION ARE IN MM


UNLESS OTHERWISE SPECIFIED: DIMENSIONS ARE IN MILLIMETERS SURFACE FINISH: TOLERANCES: LINEAR: ANGULAR:		FINISH: 1/4		DEBURR AND BREAK SHARP EDGES		DO NOT SCALE DRAWING		REVISION	
						INDRA HYDRO TECH PUMPS PVT,LTD., Bangalore,INDIA.			
						TITLE: END SUCTION PUMPS 50 x 32-160			
DRAWN V LOKESH		SIGNATURE		DATE 16/06/18					
CHK'D ARVIND				16/06/18					
APPV'D ARVIND				16/06/18					
MFG									
Q.A						MATERIAL:		DWG NO. 502- BOM	
						WEIGHT: 330 KG		SCALE:1:1	
								SHEET 1 OF 4	
								A3	

THE BARE SHAFT SINGLE STAGE CENTRIFUGAL PUMPS DESIGNED AND MANUFACTURED TO ISO STANDARD 2858



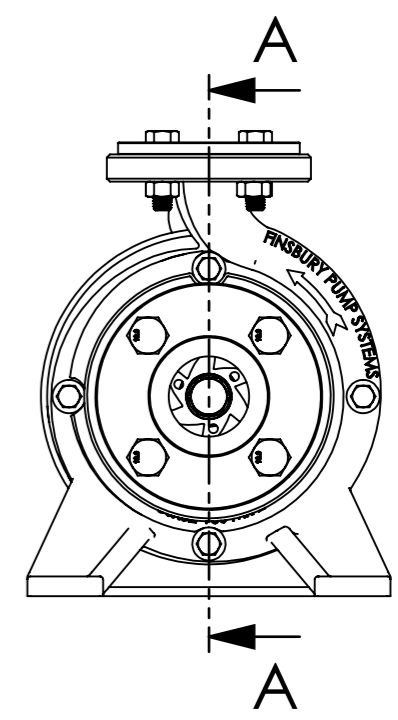
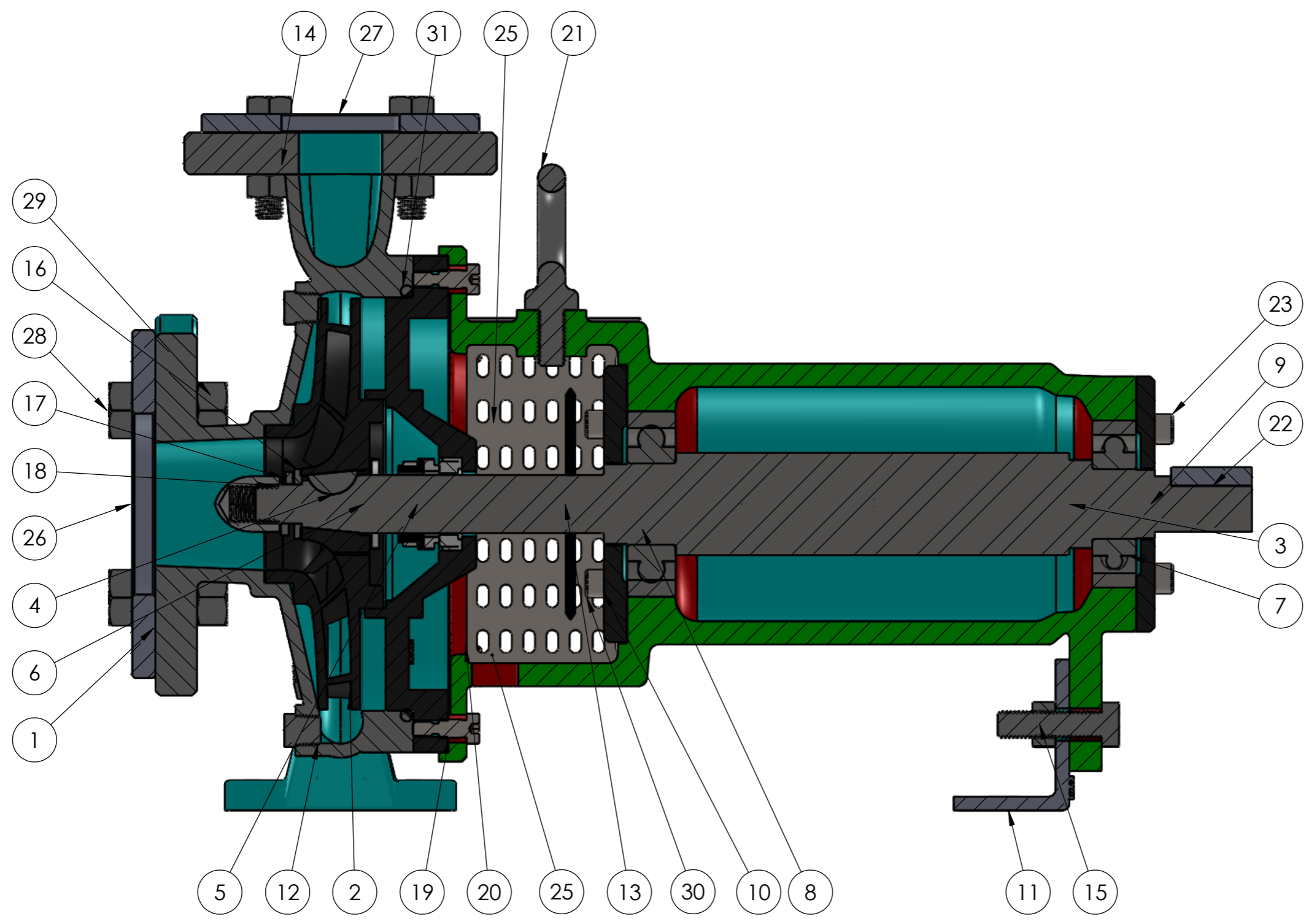
Inlet size :		50mm	Mounting:	B	50MM
Outlet size :		32mm		M1	100MM
Impeller size:		146 to 177mm 177mm is standard		M2	70MM
Pump:	A	80MM		N1	240MM
	F	398.8MM		N2	190MM
	H1	160MM		N3	110MM
	H2	132MM		N4	150MM
Bolt holes:	S1	M12	Shaft end:	D	24MM
	S2	M12		L	42MM

NOTE : 1- SUCTION AND DELIVERY FLANGE LENGTH IS NOT ADDED
2-THESE ARE ISO 2858 STANDARD BARE SHAFT CENTRIFUGAL PUMP DIMENSIONS.

UNLESS OTHERWISE SPECIFIED: DIMENSIONS ARE IN MILLIMETERS SURFACE FINISH: TOLERANCES: LINEAR: ANGULAR:		FINISH: 2/4	DEBURR AND BREAK SHARP EDGES	DO NOT SCALE DRAWING	REVISION
DRAWN V LOKESH		SIGNATURE	DATE 16/06/18	INDRA HYDRO TECH PUMPS PVT,LTD., Bangalore,INDIA. 	TITLE: END SUCTION PUMPS 50 x 32-160
CHK'D ARVIND			DATE 16/06/18		
APPV'D ARVIND			DATE 16/06/18		
MFG					
Q.A					
MATERIAL:			DWG NO. 502- BOM	A3	
WEIGHT: 330 KG			SCALE:1:1	SHEET 2 OF 4	

8 7 6 5 4 3 2 1

F
E
D
C
B
A

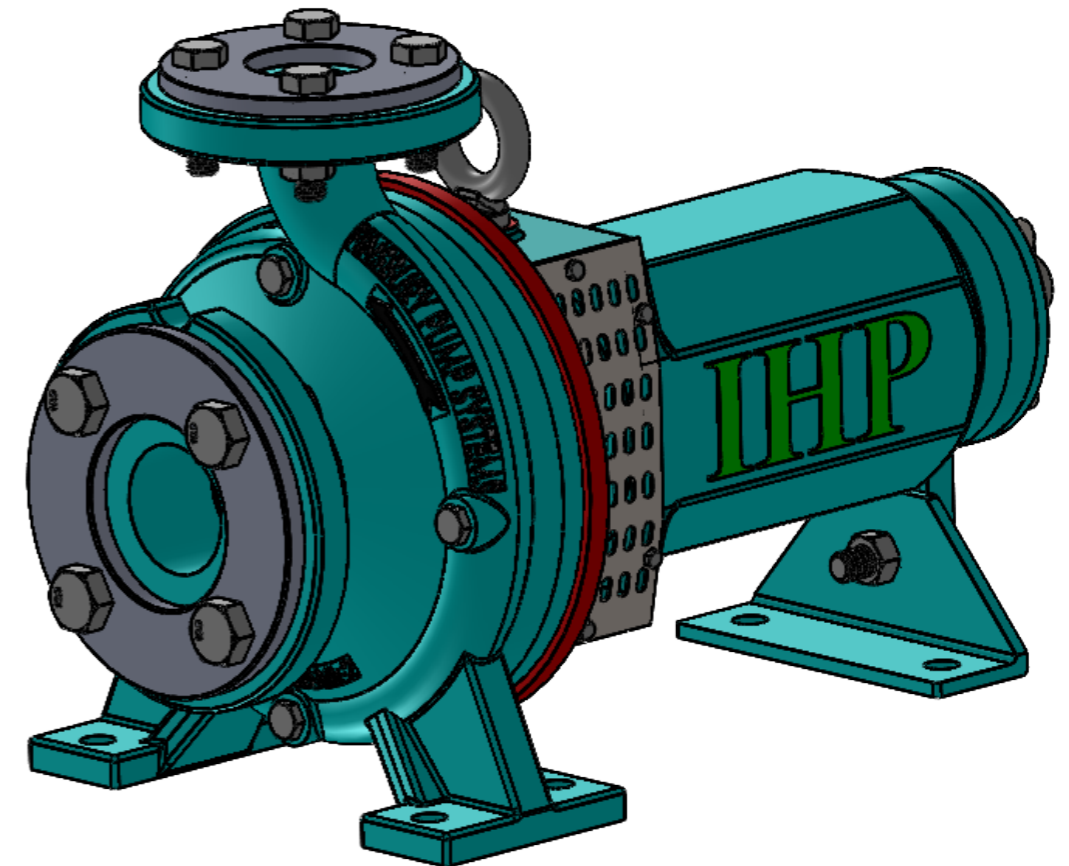



SECTION A-A
SCALE 1 : 2

UNLESS OTHERWISE SPECIFIED: DIMENSIONS ARE IN MILLIMETERS SURFACE FINISH: TOLERANCES: LINEAR: ANGULAR:		FINISH: 3/4	DEBURR AND BREAK SHARP EDGES	DO NOT SCALE DRAWING	REVISION
DRAWN V LOKESH		SIGNATURE	DATE 16/06/18	INDRA HYDRO TECH PUMPS PVT,LTD., Bangalore,INDIA. IHP <small>www.ihp.com</small>	
CHK'D ARVIND			DATE 16/06/18	TITLE: END SUCTION PUMPS	
APPV'D ARVIND			DATE 16/06/18	50 x 32-160	
MFG				DWG NO.	502- BOM
Q.A			MATERIAL:		A3
			WEIGHT: 330 KG	SCALE:1:1	SHEET 3 OF 4

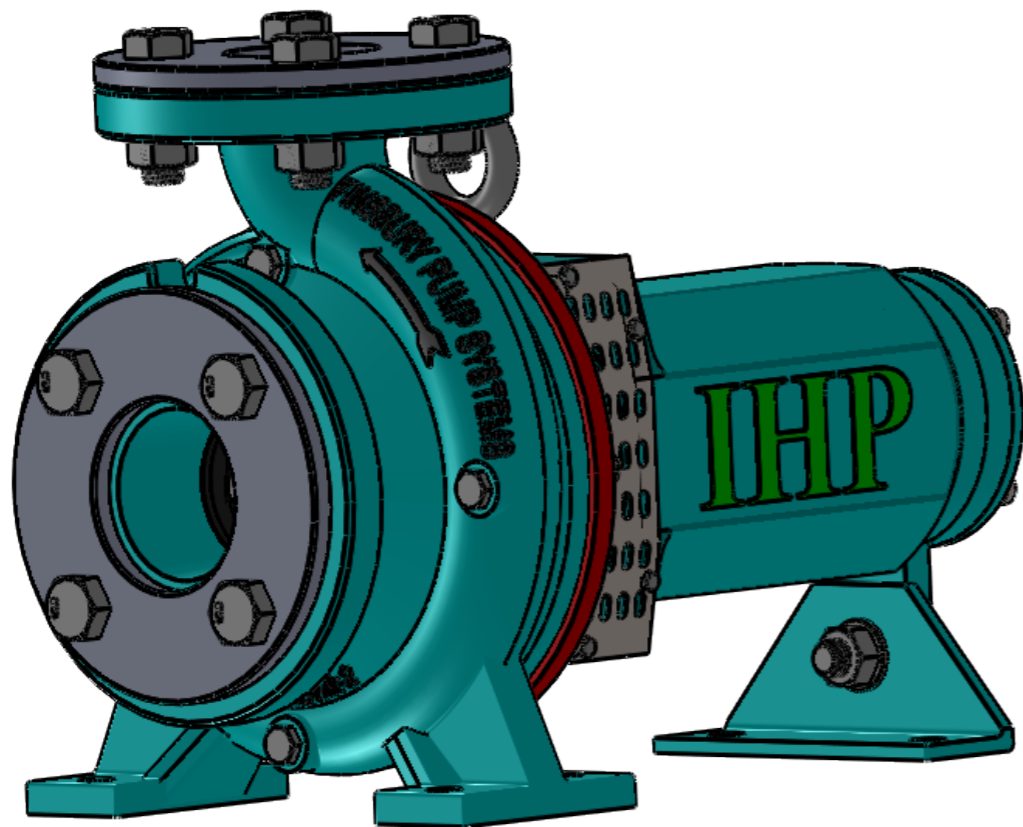
8 7 6 5 4 3 2 1

ITEM NO.	PART NO	DESCRIPTION	QTY.
1	002	002 50x32-160 Casing-2	1
2	102	102 50x32-160 Impeller	1
3	300	300 Shaft	1
4	607	607 Woodruff Key	1
5		25mm Mechanical Seal	1
6	55	Back Plate 00055	1
7	6306	Bearing 6306 - OD72 x ID30	1
8	6307	Bearing 6307 - OD80 x ID35	1
9	50	End Plate for Bearing housing 00050	1
10	50	Front Plate for Bearing housing 50	1
11	390	L Feet 00390	1
12		BSP QUATER INCH	4
13		Water Slinger ID 25mm	1
14		HEX BOLT M12 X 45MM	5
15		HEX NUT M12	5
16		PLAIN WASHER M16	1
17		SPRING WASHER M16	1
18		DOME NUT M16	1
19		ALLEN BOLT M8 x 12MM	4
20		ALLEN BOLT M8 X 15MM	4
21		EYE BOLT M12	1
22		KEY 8 X 8 X 35-200	1
23		ALLEN BOLT M8 x 1.25 x 12	4
24		HEX BOLT M4 X 8MM	8
25		safety cover	2
26		FLANGE PCD 114MM-200	1
27		FLANGE PCD 87MM-160	1
28		HEX BOLT M16 X 40MM	4
29		HEX NUT M16	4
30		ALLEN BOLT M8 X 20MM	4
31		ORING ID 178 MM	1
32	50	Bearing Housing 00050	1



UNLESS OTHERWISE SPECIFIED: DIMENSIONS ARE IN MILLIMETERS SURFACE FINISH: TOLERANCES: LINEAR: ANGULAR:		FINISH: 4/4	DEBURR AND BREAK SHARP EDGES	DO NOT SCALE DRAWING	REVISION
DRAWN V LOKESH		SIGNATURE	DATE 16/06/18	INDRA HYDRO TECH PUMPS PVT,LTD., Bangalore,INDIA. 	
CHK'D ARVIND			DATE 16/06/18	TITLE: END SUCTION PUMPS 50 x 32-160	
APPV'D ARVIND			DATE 16/06/18	DWG NO. 502- BOM	
MFG				SCALE:1:1	
Q.A			MATERIAL:	SHEET 4 OF 4	
			WEIGHT: 330 KG	A3	

THE BARE SHAFT SINGLE STAGE CENTRIFUGAL PUMPS DESIGNED AND MANUFACTURED TO ISO STANDARD 2858




PUMPS : **Model** : 65 X 50-160-A
Casing : Cast Iron -16 bar pressure rating
Impeller : cast iron
Shaft : 431 stainless steel with water slinger
Mechanical seal : Carbon ceramic
Bearings : Fully sealed heavy duty roller bearings

PUMP DUTY: **Maximum head** : 62m
Maximum flow : 22l/sec
Maximum shaft power : 15kw at maximum flow
Maximum speed : 3500rpm

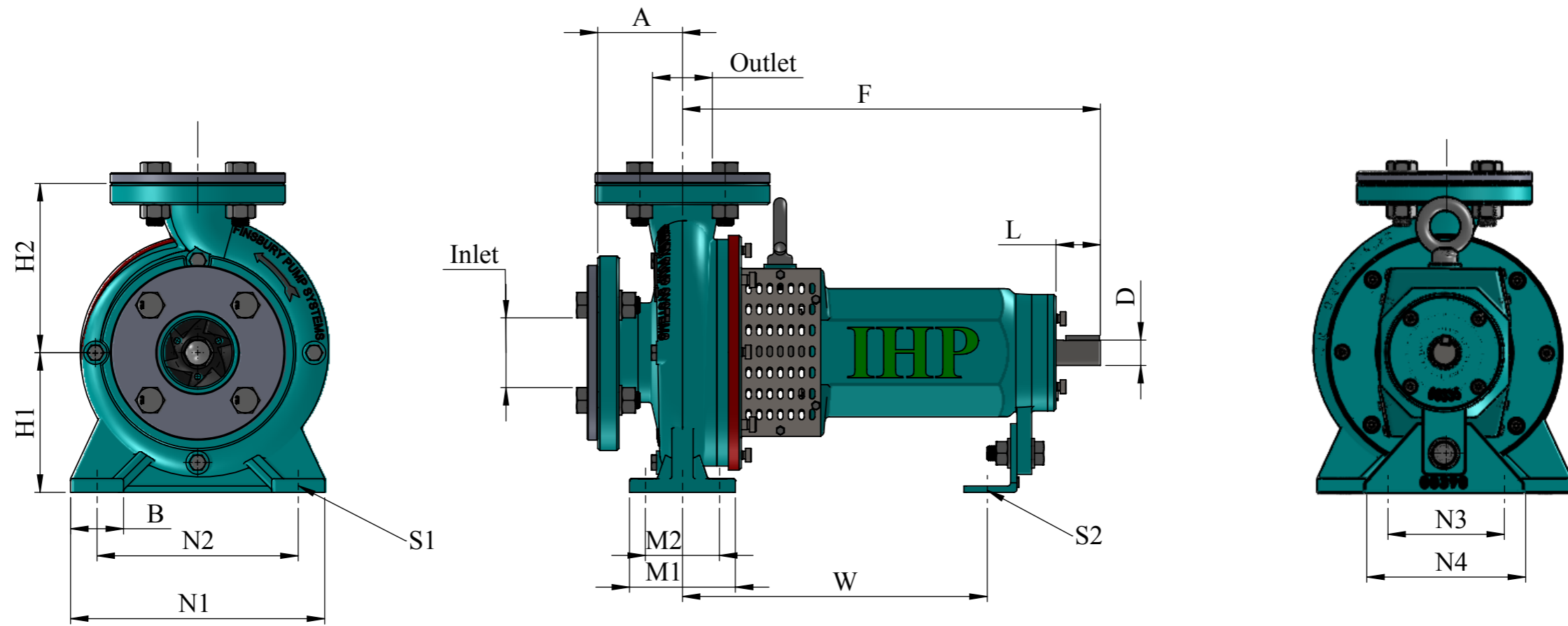
GENERAL : **Maximum ambient temperature** : +60°c
Maximum fluid temperature : +80°c
Maximum casing pressure : 16 bar
Fluids must be clean and free from abrasive particals

Performance curves : The performance cureves are based on a kinematic viscosity value of 1mm²/s and a density of 1000kg/m³ at 15° c

Wear rings : Bronze wear rings can be fitted to impeller and casings.

UNLESS OTHERWISE SPECIFIED: DIMENSIONS ARE IN MILLIMETERS SURFACE FINISH: TOLERANCES: LINEAR: ANGULAR:			FINISH: 1/4		DEBURR AND BREAK SHARP EDGES	DO NOT SCALE DRAWING	REVISION
						INDRA HYDROTECH PUMPS PVT, LTD., Bangalore, INDIA. 	
						TITLE: END SUCTION PUMPS 65 X50-160	
NAME	SIGNATURE	DATE				DWG NO.	A3
DRAWN V LOKESH		18/5/18				503- BOM	SHEET 1 OF 4
CHK'D ARVIND		18/5/18					
APPV'D ARVIND		18/5/18					
MFG							
Q.A			MATERIAL:			SCALE:1:1	
			WEIGHT: 25 KG				

THE BARE SHAFT SINGLE STAGE CENTRIFUGAL PUMPS DESIGNED AND MANUFACTURED TO ISO STANDARD 2858



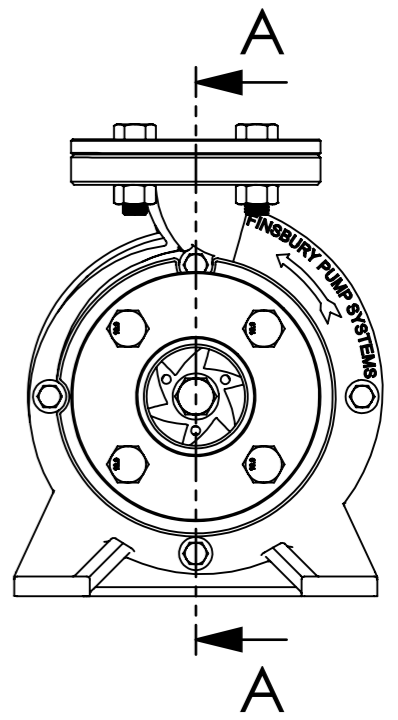
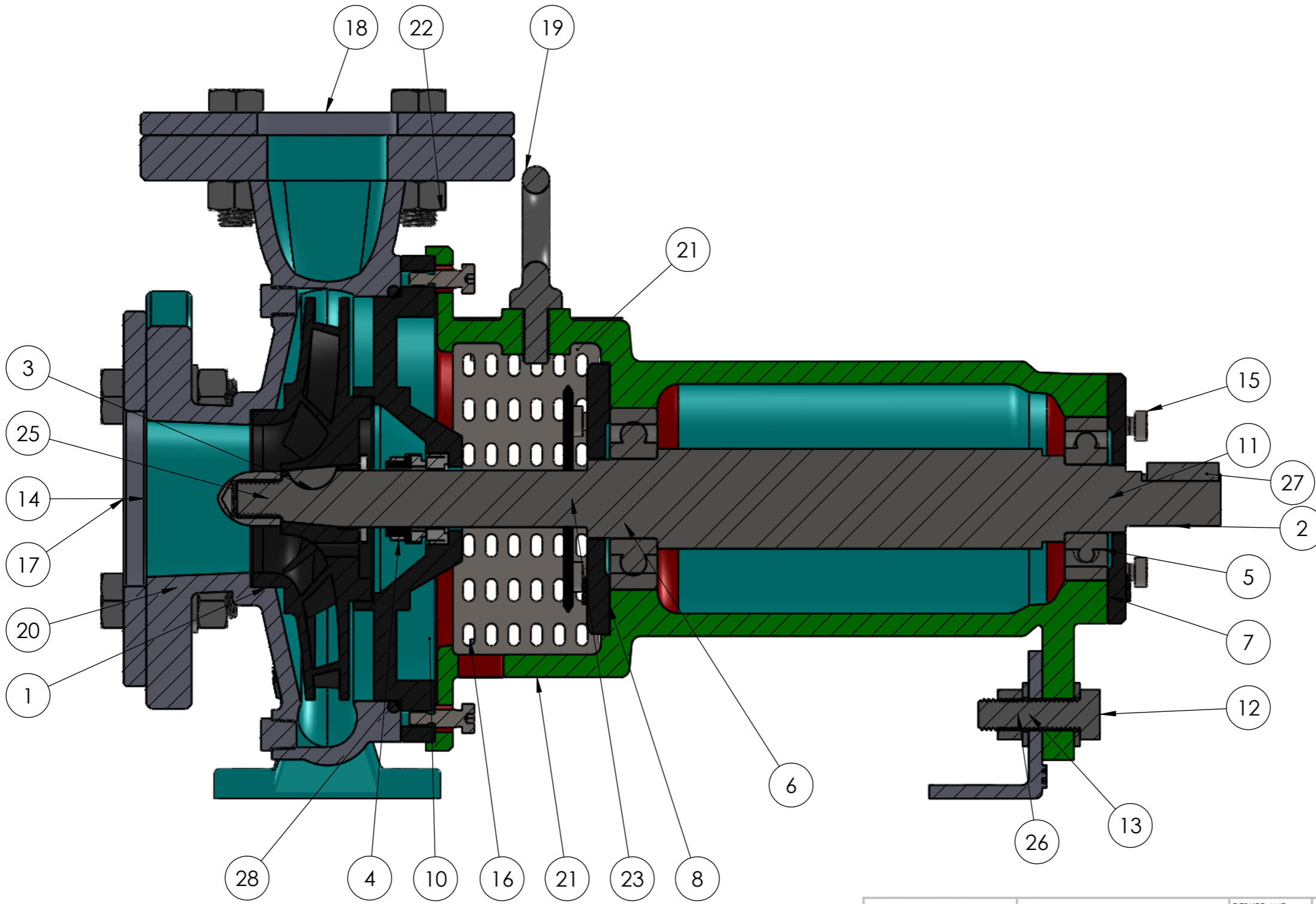
Inlet size :		65mm	Mounting:	B	50MM
Outlet size :		50mm		M1	100MM
Impeller size:		146 to 177mm 177mm is standard		M2	70MM
				N1	240MM
Pump:	A	80MM		N2	190MM
	F	394.80MM		N3	110MM
	H1	132MM		N4	150MM
	H2	160MM		W	287.90MM
Bolt holes:	S1	M12	Shaft end:	D	24MM
	S2	M12		L	42MM

NOTE : 1- SUCTION AND DELIVERY FLANGE LENGTH IS NOT ADDED
 2-THESE ARE ISO 2856 STANDARD BARE SHAFT CENTRIFUGAL PUMP DIMENSIONS.

UNLESS OTHERWISE SPECIFIED: DIMENSIONS ARE IN MILLIMETERS SURFACE FINISH: TOLERANCES: LINEAR: ANGULAR:		FINISH: 2/4	DEBURR AND BREAK SHARP EDGES	DO NOT SCALE DRAWING	REVISION
DRAWN V LOKESH SIGNATURE DATE 18/5/18			INDRA HYDROTECH PUMPS PVT, LTD., Bangalore, INDIA. IHP		
CHK'D ARVIND DATE 18/5/18			TITLE: END SUCTION PUMPS 65 X50-160		
APPV'D ARVIND DATE 18/5/18			DWG NO. 503- BOM		
MFG			SCALE:1:1		
Q.A			SHEET 2 OF 4		
WEIGHT: 25 KG			A3		

8 7 6 5 4 3 2 1

F
E
D
C
B
A

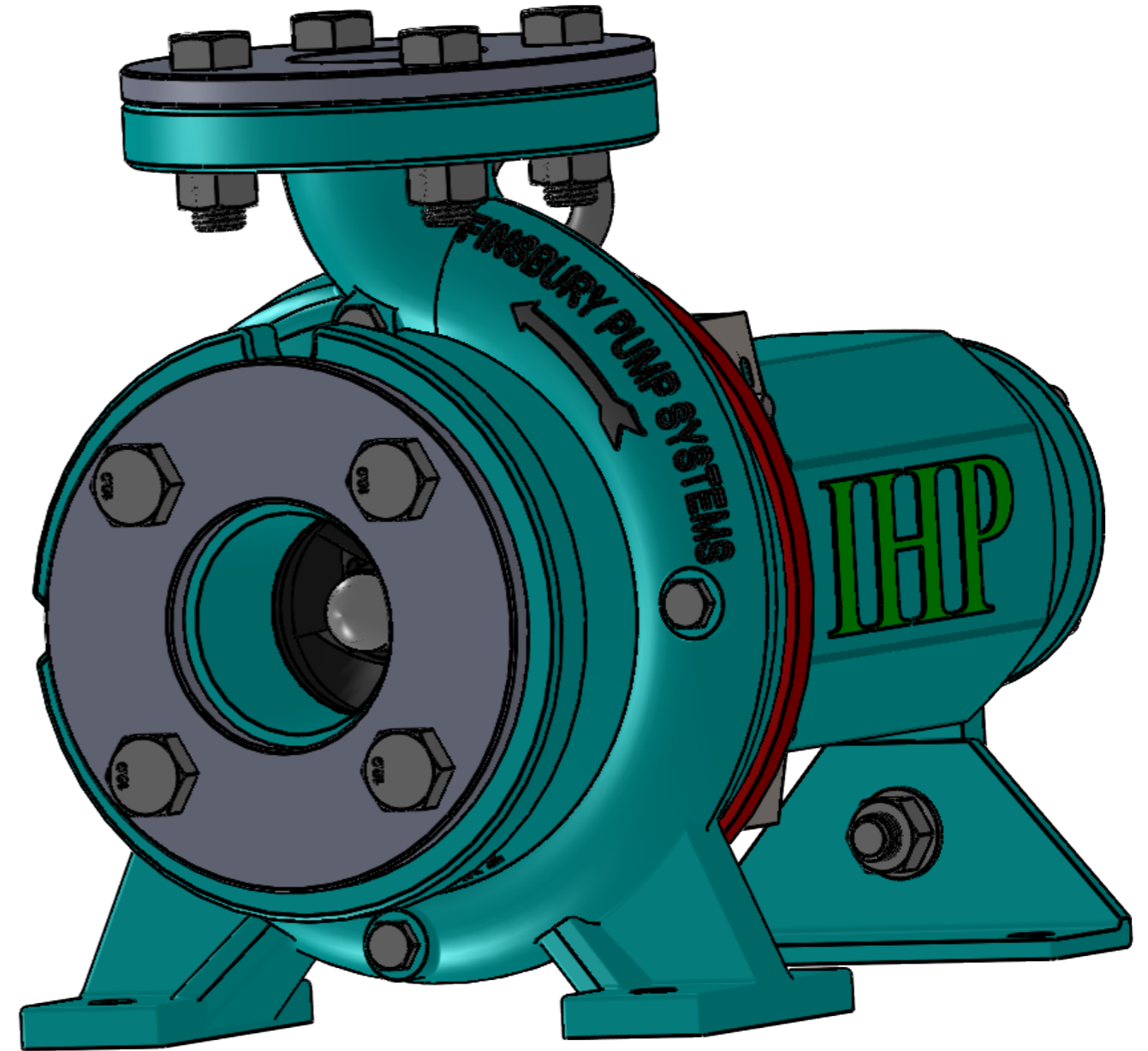


SECTION A-A
SCALE 1 : 2

ALL DIMENSION ARE IN MM

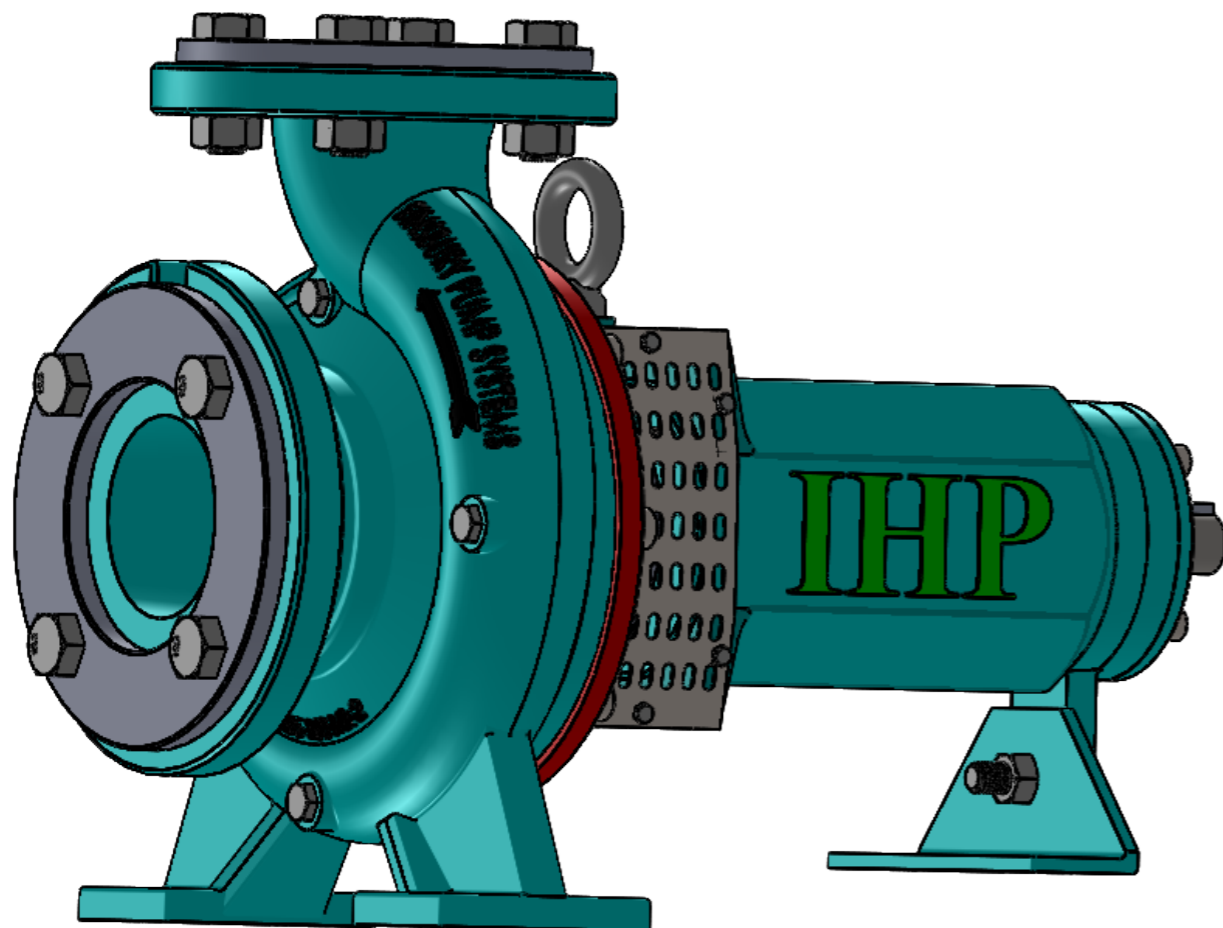
UNLESS OTHERWISE SPECIFIED: DIMENSIONS ARE IN MILLIMETERS SURFACE FINISH: TOLERANCES: LINEAR: ANGULAR:		FINISH: 3/4		DEBURR AND BREAK SHARP EDGES		DO NOT SCALE DRAWING		REVISION	
DRAWN V LOKESH		SIGNATURE		DATE 18/5/18		INDRA HYDRO TECH PUMPS PVT,LTD., Bangalore,INDIA.		IHP <small>www.ihp.com</small>	
CHK'D ARVIND				DATE 18/5/18		TITLE: END SUCTION PUMPS 65 X50-160			
APPV'D ARVIND				DATE 18/5/18		DWG NO. 503- BOM			
MFG						SCALE:1:1		SHEET 3 OF 4	
Q.A				MATERIAL:		WEIGHT: 25 KG		A3	

ITEM NO.	PART NO	DESCRIPTION	QTY.
1	103	103 65X50-160 IMPELLER-1	1
2	301	301 SHAFT	1
3	607	607 WOODRUFF KEY	1
4		25mm MECHANICAL SEAL	1
5	6306	BEARING 6306 - OD72 X ID30	1
6	6307	BEARING 6307 - OD80 X ID35	1
7	50	END PLATE FOR BEARING HOUSING 00050	1
8	50	FRONT PLATE FOR BEARING HOUSING 50	1
S2	00390	L FEET 00390	1
10	55	BACK PLATE 00055	1
11	50	BEARING HOUSING 00050 - 2016-2	1
12		HEX BOLT M14	1
13		PLAIN WASHER M16	6
14	160	CASING 65 X 50	1
15		ALLEN BOLT M8	24
16		SHSSCREW 0.375X0.625-N	4
17		FLANGE 65mm X PCD 127	1
18		FLANGE 65 X PCD 114	1
19		EYE BOLT M12X20	1
20		HEX BOLT M16	8
21		SAFETY COVER	2
22		HEX NUT M16	8
23		WATER SLINGER ID 25mm	1
24		SAFETY COVER BOLT M4 X8	8
25		DOME NUT M16	1
26		HEX NUT M14	1
27		KEY 30X8X8	1
28	BS 365	ORING 310 ID 178MM	1



UNLESS OTHERWISE SPECIFIED: DIMENSIONS ARE IN MILLIMETERS SURFACE FINISH: TOLERANCES: LINEAR: ANGULAR:		FINISH: 4/4	DEBURR AND BREAK SHARP EDGES	DO NOT SCALE DRAWING	REVISION
DRAWN V LOKESH		SIGNATURE	DATE 18/5/18	INDRA HYDROTECH PUMPS PVT, LTD., Bangalore, INDIA. IHP	
CHK'D ARVIND			DATE 18/5/18	TITLE: END SUCTION PUMPS 65 X50-160	
APPV'D ARVIND			DATE 18/5/18	DWG NO. 503- BOM	
MFG				A3	
Q.A			MATERIAL:	SCALE:1:1	
			WEIGHT: 25 KG	SHEET 4 OF 4	

THE BARE SHAFT SINGLE STAGE CENTRIFUGAL PUMPS DESIGNED AND MANUFACTURED TO ISO STANDARD 2858



PUMPS : **Model** : 80 X 65-160-A
Casing : Cast Iron -16 bar pressure rating
Impeller : Cast iron
Shaft : 431 stainless steel with water slinger
Mechanical seal : Carbon ceramic
Bearings : Fully sealed heavy duty roller bearings


PUMP DUTY: **Maximum head** :61m
Maximum flow :31.5L/sec
Maximum shaft power :17kw at miximum flow
Maximum speed : 3500rpm

GENERAL : **Maximum ambient temperature** :+60° c
Maximum fluid temperature :+80° c
Maximum casing pressure :16 bar
Fluids must be clean and free from abrasive particals

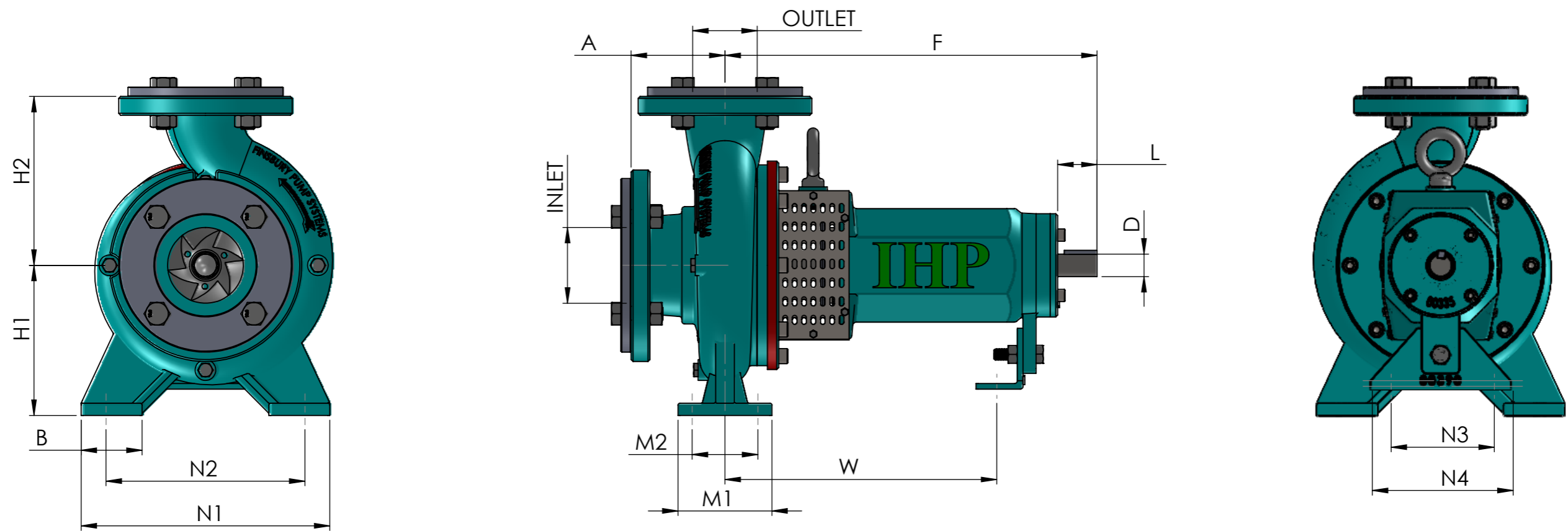
Performance curves : The performance cureves are based on a kinematic viscosity value of 1mm2/s and a density of 1000kg/m3 at 15° c

Wear rings : Bronze wear rings can be fitted to impeller and casings.

ALL DIMENSION ARE IN MM


UNLESS OTHERWISE SPECIFIED: DIMENSIONS ARE IN MILLIMETERS SURFACE FINISH: TOLERANCES: LINEAR: ANGULAR:		FINISH: 1/4		DEBURR AND BREAK SHARP EDGES		DO NOT SCALE DRAWING		REVISION	
						INDRA HYDRO TECH PUMPS PVT,LTD., Bangalore,INDIA.			
						TITLE: END SUCTION PUMPS 80 X65-160			
DRAWN V LOKESH		SIGNATURE		DATE 16/06/18					
CHK'D ARVIND				16/06/18					
APPV'D ARVIND				16/06/18					
MFG									
Q.A						MATERIAL:		DWG NO. 504- BOM	
						WEIGHT: 411 KG		SCALE:1:1	
								SHEET 1 OF 4	
								A3	

THE BARE SHAFT SINGLE STAGE CENTRIFUGAL PUMPS DESIGNED AND MANUFACTURED TO ISO STANDARD 2858

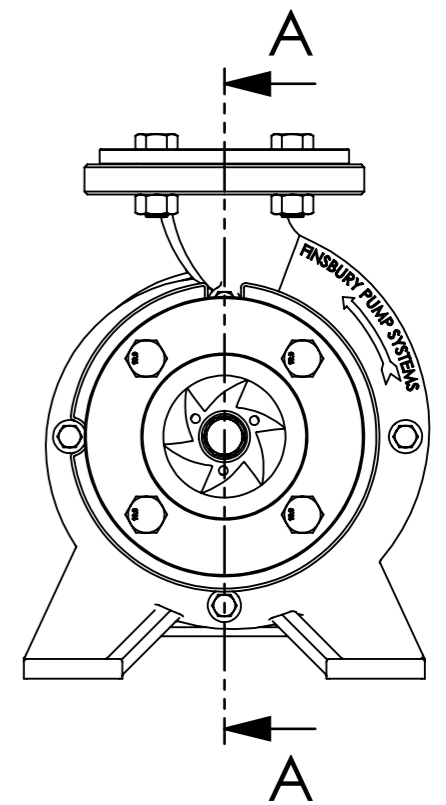


Inlet size :		80mm	Mounting:	B	65MM
Outlet size :		65mm		M1	100MM
Impeller size:		146 to 177mm 177mm is standard		M2	70MM
				N1	265MM
Pump:	A	100MM		N2	212MM
	F	396.5MM		N3	110MM
	H1	160MM		N4	150MM
	H2	180MM		W	289.6MM
Bolt holes:	S1	M12	Shaft end:	D	24MM
	S2	M12		L	42MM

**NOTE : 1- SUCTION AND DELIVERY FLANGE LENGTH IS NOT ADDED
2-THESE ARE ISO 2858 STANDARD BARE SHAFT CENTRIFUGAL PUMP DIMENSIONS.**

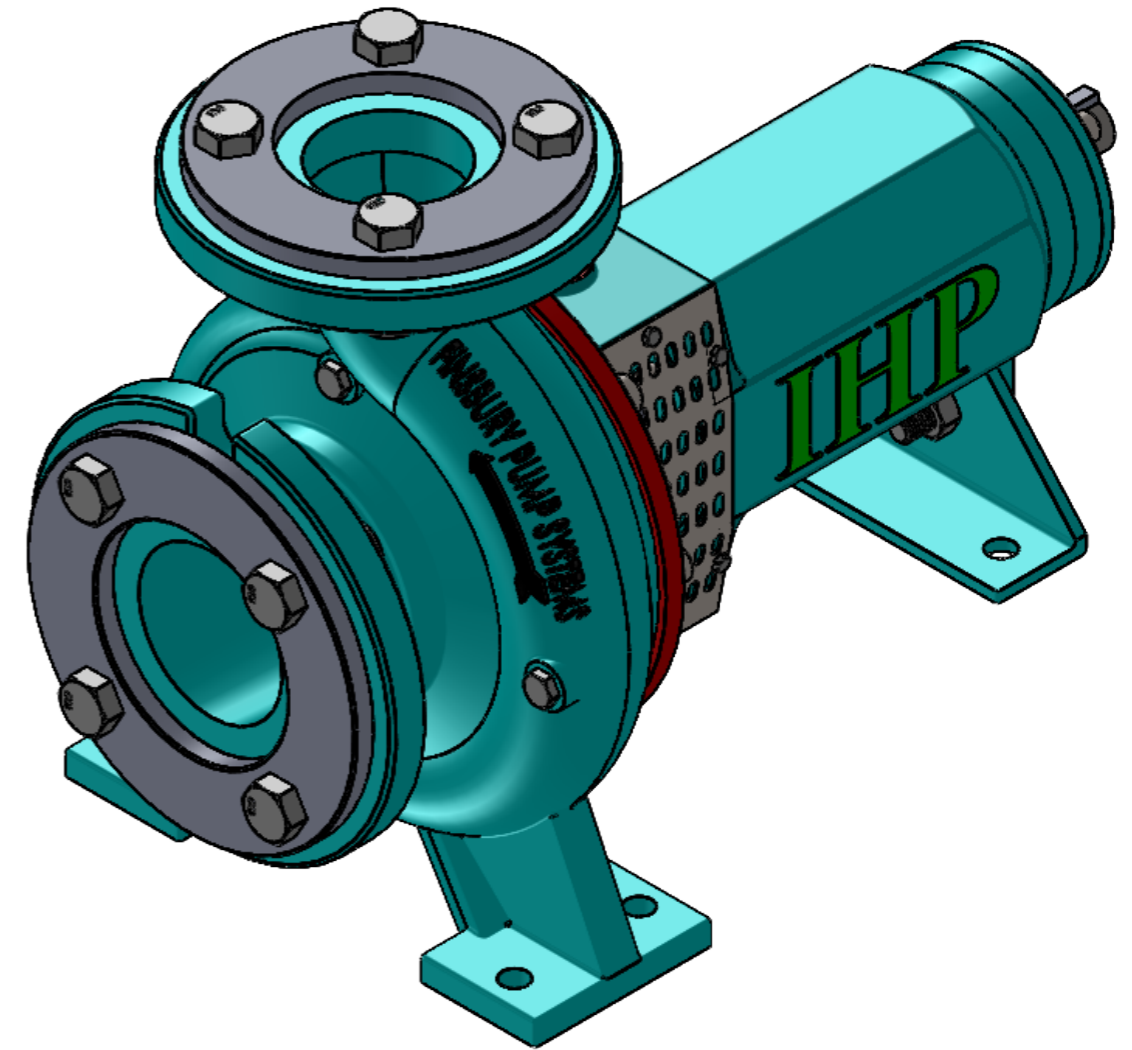
UNLESS OTHERWISE SPECIFIED: DIMENSIONS ARE IN MILLIMETERS SURFACE FINISH: TOLERANCES: LINEAR: ANGULAR:			FINISH: 2/4	DEBURR AND BREAK SHARP EDGES	DO NOT SCALE DRAWING	REVISION
DRAWN V LOKESH			SIGNATURE	DATE 16/06/18	INDRA HYDRO TECH PUMPS PVT,LTD., Bangalore,INDIA. 	
CHK'D ARVIND				16/06/18	TITLE: END SUCTION PUMPS 80 X65-160	
APPV'D ARVIND				16/06/18	DWG NO. 504- BOM	
MFG					A3	
Q.A				MATERIAL:	SCALE:1:1	
				WEIGHT: 411 KG	SHEET 2 OF 4	


SECTION A-A
SCALE 1 : 2.5



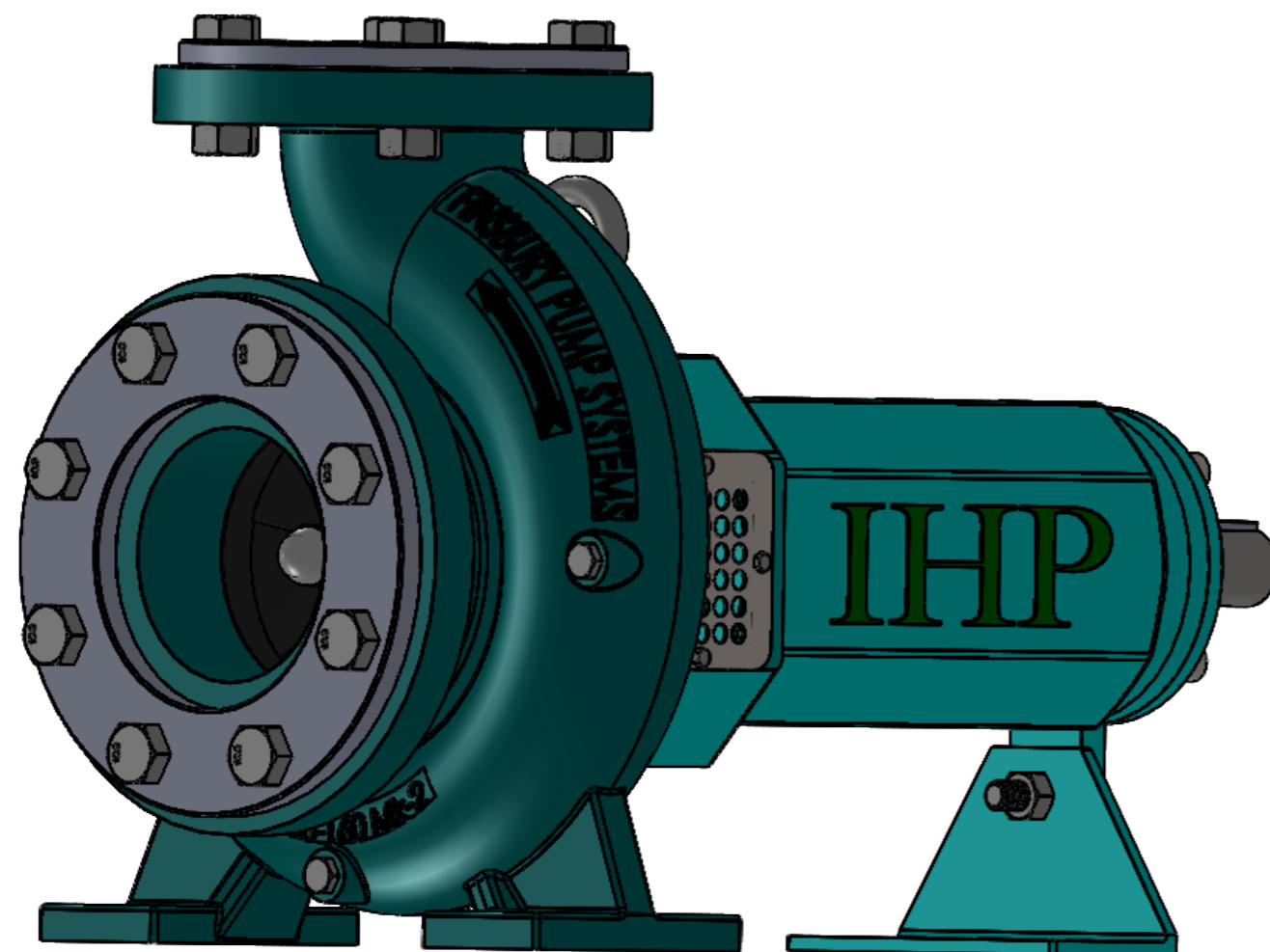
UNLESS OTHERWISE SPECIFIED: DIMENSIONS ARE IN MILLIMETERS SURFACE FINISH: TOLERANCES: LINEAR: ANGULAR:		FINISH: 3/4	DEBURR AND BREAK SHARP EDGES	DO NOT SCALE DRAWING	REVISION
DRAWN V LOKESH		SIGNATURE	DATE 16/06/18	INDRA HYDRO TECH PUMPS PVT,LTD., Bangalore,INDIA. IHP <small>www.indrahydro.com</small>	
CHK'D ARVIND			DATE 16/06/18	TITLE: END SUCTION PUMPS 80 X 65-160	
APPV'D ARVIND			DATE 16/06/18	DWG NO. 504- BOM	
MFG				A3	
Q.A			MATERIAL:	SCALE:1:1	
			WEIGHT: 411 KG	SHEET 3 OF 4	

ITEM NO.	PART NO	PART NUMBER	QTY.
1	004	004 80X65-160 CASING-4	1
2	104	104 80X65-160 IMPELLER-1	1
3	302	302 SHAFT	1
4	607	607 WOODRUFF KEY	1
5		25mm MECHANICAL SEAL	1
6	6306	BEARING 6306 - OD72 X ID30	1
7	6307	BEARING 6307 - OD80 X ID35	1
8	055	BACK PLATE 00055	1
9	050	END PLATE FOR BEARING HOUSING 00050	1
10	50	FRONT PLATE FOR BEARING HOUSING 50	1
11	390	L FEET 00390	1
12	050	BEARING HOUSING 00050 - 2016-2	1
13		BSP QUATER INCH	4
14		WATER SLINGER ID 25mm	1
15		EYE BOLT M12	1
16		HEX BOLT M12 X 45 MM	1
17		PLAIN WASHER M16	1
18		SPLIT LOCK M16	1
19		DOME NUT M16	1
20		KEY 8 X 8 X 35-160	1
21		STUD BOLT M8 X 1.25 X 15	4
22		STUD BOLT M10 X 1.5 X 25	8
23		STUD BOLT M8 X 20 MM	4
24		FLANGE PCD 146MM-200	1
25		FLANGE PCD 127MM-160	1
26		HEX BOLT M16 X45MM	8
27		HEX NUT M16	8
28		SAFETY COVER	2
29		HEX BOLT M4 X 8MM	8
30		ORING ID 178 MM	1
31		HEX NUT M12	1



UNLESS OTHERWISE SPECIFIED: DIMENSIONS ARE IN MILLIMETERS SURFACE FINISH: TOLERANCES: LINEAR: ANGULAR:		FINISH: 4/4	DEBURR AND BREAK SHARP EDGES	DO NOT SCALE DRAWING	REVISION
DRAWN V LOKESH		SIGNATURE	DATE 16/06/18	INDRA HYDRO TECH PUMPS PVT.LTD., Bangalore,INDIA. 	
CHK'D ARVIND			16/06/18	TITLE: END SUCTION PUMPS 80 X65-160	
APPV'D ARVIND			16/06/18	DWG NO. 504- BOM	
MFG				SCALE:1:1	
Q.A			MATERIAL:	SHEET 4 OF 4	
			WEIGHT: 411 KG	A3	

THE BARE SHAFT SINGLE STAGE CENTRIFUGAL PUMPS DESIGNED AND MANUFACTURED TO ISO STANDARD 2858




PUMPS : **Model** : **100 X 80-160-A**
Casing : **Cast Iron -16 bar pressure rating**
Impeller : **Cast iron**
Shaft : **431 stainless steel with water slinger**
Mechanical seal : **Carbon ceramic**
Bearings : **Fully sealed heavy duty roller bearings**

PUMP DUTY: **Maximum head** : **57m**
Maximum flow : **43L/sec**
Maximum shaft power : **25kw at miximum flow**
Maximum speed : **3500rpm**

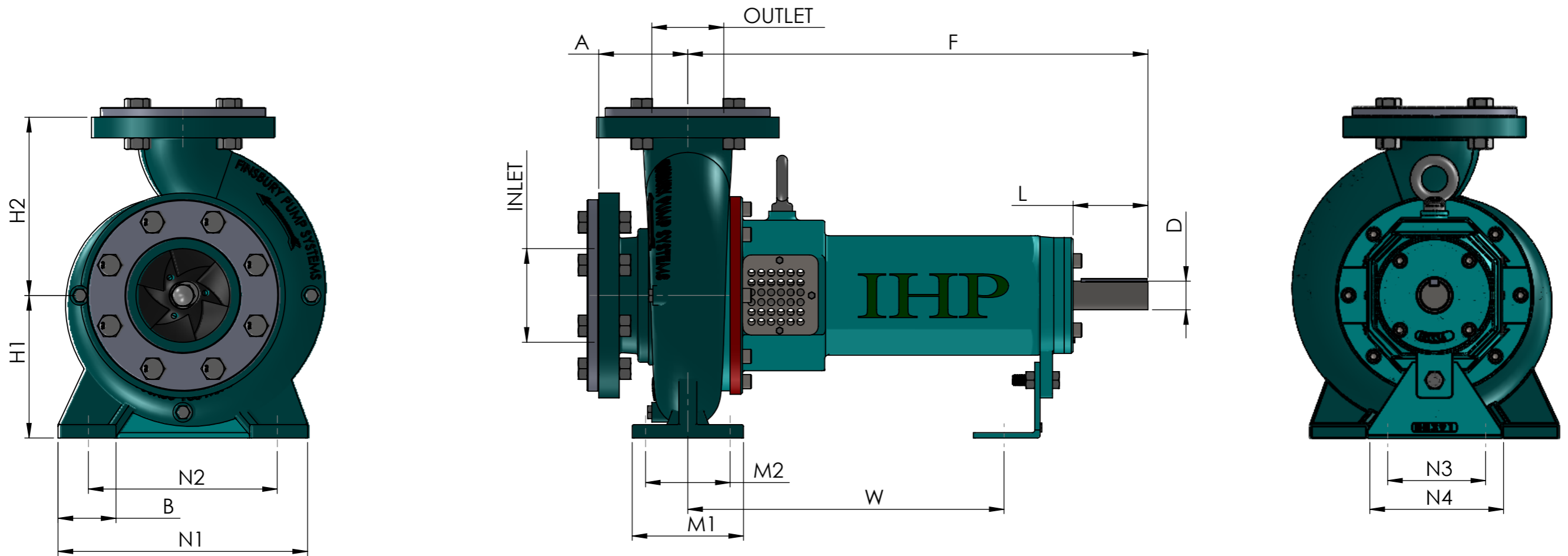
GENERAL : **Maximum ambient temperature** : **+60°c**
Maximum fluid temperature : **+80°c**
Maximum casing pressure : **16 bar**
Fluids must be clean and free from abrasive particals

Performance curves : **The performance cureves are based on a kinematic viscosity value of 1mm2/s and a density of 1000kg/m3 at 15° c**

Wear rings : **Bronze wear rings can be fitted to impeller and casings.**


UNLESS OTHERWISE SPECIFIED: DIMENSIONS ARE IN MILLIMETERS SURFACE FINISH: TOLERANCES: LINEAR: ANGULAR:		FINISH: 1/4		DEBURR AND BREAK SHARP EDGES		DO NOT SCALE DRAWING		REVISION	
						INDRA HYDRO TECH PUMPS PVT,LTD., Bangalore,INDIA.			
						TITLE: END SUCTION PUMPS 100 x 80-160			
DRAWN V LOKESH		SIGNATURE		DATE 16/06/18		DWG NO. 505- BOM		A3	
CHK'D ARVIND				DATE 16/06/18					
APPV'D ARVIND				DATE 16/06/18					
MFG									
Q.A				MATERIAL:					
				WEIGHT: 382 KG		SCALE:1:1		SHEET 1 OF 4	

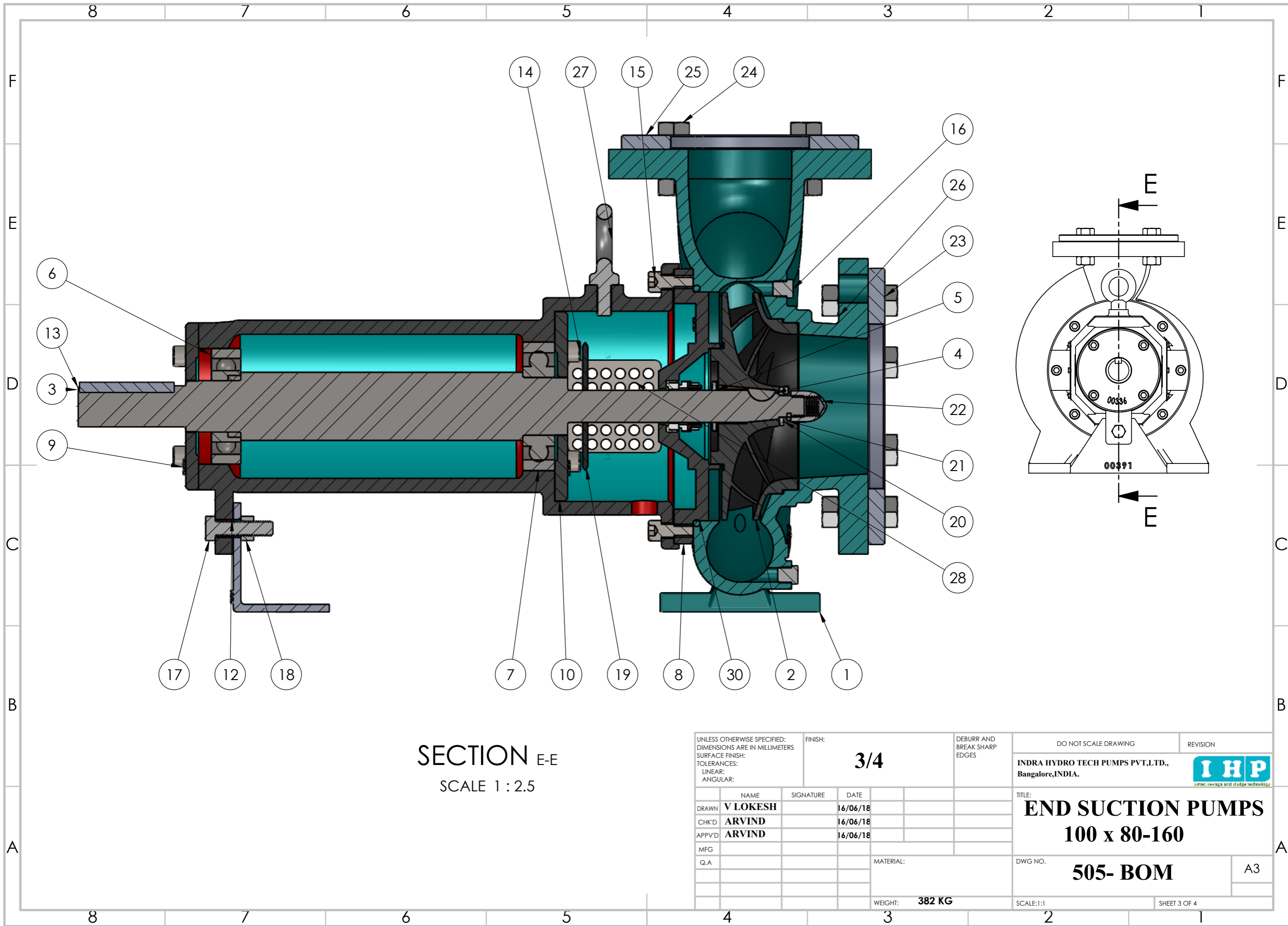
THE BARE SHAFT SINGLE STAGE CENTRIFUGAL PUMPS DESIGNED AND MANUFACTURED TO ISO STANDARD 2858



Inlet size :		80mm	Mounting:	B	65MM
Outlet size :		65mm		M1	125MM
Impeller size:		146 to 177mm		M2	95MM
		177mm is standard		N1	280MM
Pump:	A	100MM		N2	212MM
	F	516.5MM		N3	110MM
	H1	160MM		N4	150MM
	H2	200MM		W	355MM
Bolt holes:	S1	M12	Shaft end:	D	32MM
	S2	M12		L	84MM

NOTE : 1- SUCTION AND DELIVERY FLANGE LENGTH IS NOT ADDED
2-THESE ARE ISO 2858 STANDARD BARE SHAFT CENTRIFUGAL PUMP DIMENSIONS.

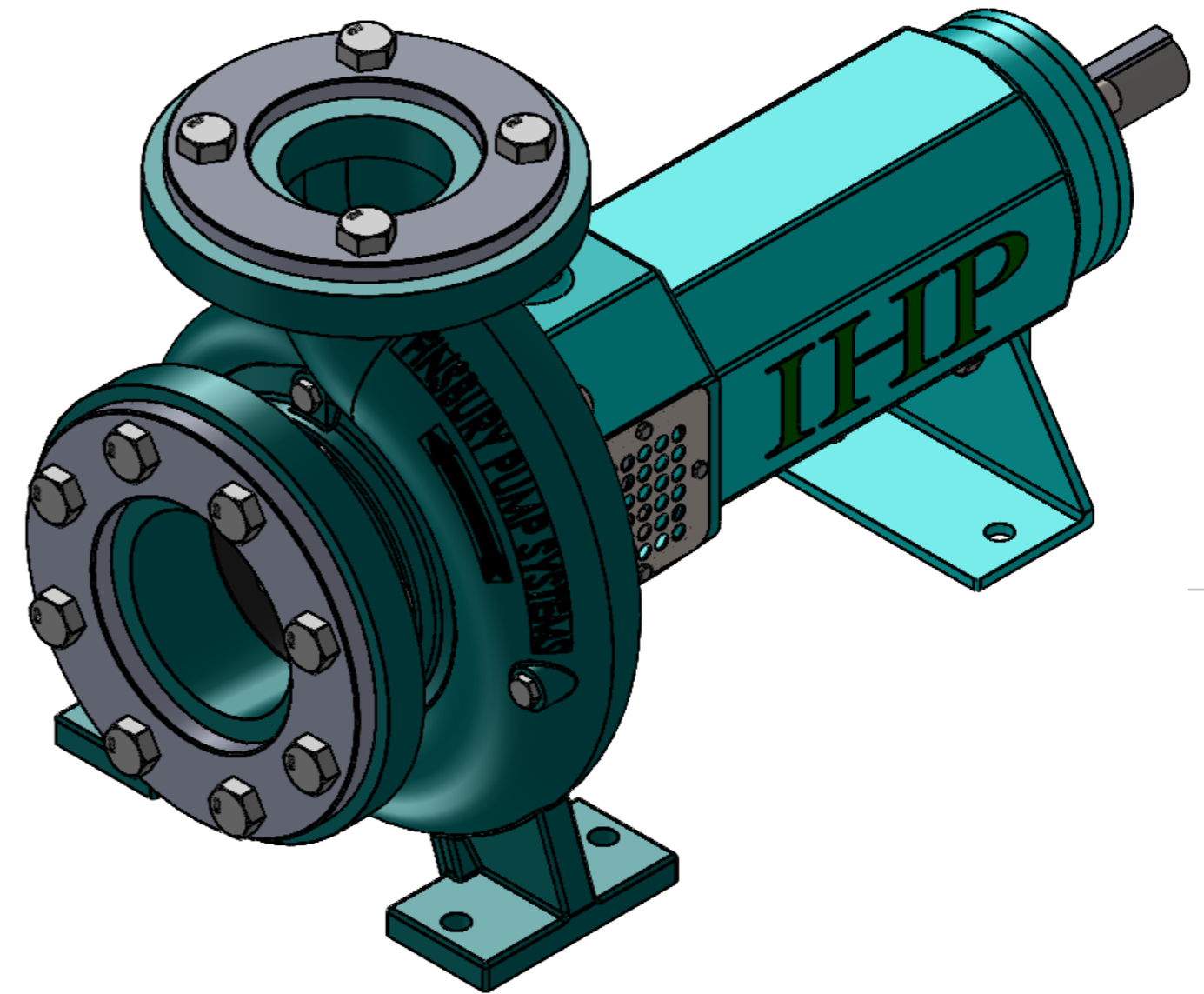
UNLESS OTHERWISE SPECIFIED: DIMENSIONS ARE IN MILLIMETERS SURFACE FINISH: TOLERANCES: LINEAR: ANGULAR:		FINISH: 2/4	DEBURR AND BREAK SHARP EDGES	DO NOT SCALE DRAWING	REVISION
DRAWN V LOKESH		SIGNATURE	DATE 16/06/18	INDRA HYDRO TECH PUMPS PVT,LTD., Bangalore,INDIA. 	
CHK'D ARVIND			16/06/18	TITLE: END SUCTION PUMPS	
APPV'D ARVIND			16/06/18	100 x 80-160	
MFG				DWG NO.	505- BOM
Q.A				SCALE:1:1	A3
			WEIGHT: 382 KG	SHEET 2 OF 4	




SECTION E-E
SCALE 1 : 2.5

UNLESS OTHERWISE SPECIFIED: DIMENSIONS ARE IN MILLIMETERS SURFACE FINISH: TOLERANCES: LINEAR: ANGULAR:			FINISH: 3/4	DEBURR AND BREAK SHARP EDGES	DO NOT SCALE DRAWING	REVISION
DRAWN V LOKESH			SIGNATURE	DATE	INDRA HYDRO TECH PUMPS PVT,LTD., Bangalore,INDIA. IHP <small>water, sewage and sludge technology</small>	
CHK'D ARVIND					TITLE: END SUCTION PUMPS 100 x 80-160	
APPV'D ARVIND					DWG NO. 505- BOM	
MFG					SCALE:1:1	
Q.A				MATERIAL:	SHEET 3 OF 4	
				WEIGHT: 382 KG	A3	

ITEM NO.	PART NO	PART NUMBER	QTY.
1	005	005 100X80-160 CASING	1
2	105	105 100X80-160 IMPELLER	1
3	306	306 SHAFT	1
4	607	607 WOODRUFF KEY	1
5		25mm MECHANICAL SEAL	1
6	6308	BEARING 6308 - OD90 X ID40	1
7	6309	BEARING 6309 - OD100 X ID45	1
8	055	BACK PLATE 00055	1
9	051	END PLATE FOR BEARING HOUSING 00051	1
10	51	FRONT PLATE FOR BEARING HOUSING 51	1
11	0391	L FEET 00391	1
12	51	BEARING HOUSING 51 - 16-2(m)	1
13		KEY 10 X 8 X 74MM	1
14		STUD BOLT M10 X 1.5 X 20	8
15		STUD BOLT M10 X 1.5 X 25	8
16		BSP QUATER INCH	4
17		HEX BOLT M12 X 45MM	1
18		HEX NUT M12	1
19		WATER SLINGER ID 25mm	1
20		PLAIN WASHER M16	1
21		SPRING WASHER M16	1
22		DOME NUT M16	1
23		FLANGE PCD 178MM. -250	1
24		HEX BOLT M16 X 45 MM	12
25		FLANGE PCD 146MM-200	1
26		HEX NUT M16	12
27		EYE BOLT M12	1
28		SAFETY COVER 200	2
29		HEX BOLT M4 X 8MM	6
30		ORING ID 178MM	1



UNLESS OTHERWISE SPECIFIED: DIMENSIONS ARE IN MILLIMETERS		FINISH:		DEBURR AND BREAK SHARP EDGES		DO NOT SCALE DRAWING		REVISION	
SURFACE FINISH:		4/4				INDRA HYDRO TECH PUMPS PVT,LTD., Bangalore,INDIA.			
TOLERANCES:						TITLE: END SUCTION PUMPS 100 x 80-160			
LINEAR:						DRAWN V LOKESH		DATE 16/06/18	
ANGULAR:						CHK'D ARVIND		DATE 16/06/18	
						APPV'D ARVIND		DATE 16/06/18	
						MFG			
						Q.A			
						MATERIAL:		DWG NO. 505- BOM	
						WEIGHT: 382 KG		SCALE:1:1	
								SHEET 4 OF 4	
								A3	